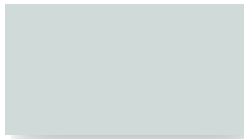


RESIDENTIAL COOL ROOF COLORS

STANDARD COLORS



Regal White
SR-71.61 E-.86 SRI-87



Old Towne Gray
SR-40.31 E-.85 SRI-44



Storm Gray
SR-29.68 E-.84 SRI-29



Zinc Gray
SR-33.24 E-.85 SRI-34



Weathered Copper
SR-33.50 E-.85 SRI-34



Musket
SR-30.10 E-.85 SRI-30



Midnight Bronze
SR-28.90 E-.84 SRI-28



Black
SR-25.00 E-.85 SRI-23



Pre-Weathered Galvalume*‡
SR-28.62 E-.87 SRI-27



Zincalume® Plus

LIMITED AVAILABILITY - Longer lead times may apply



Parchment
SR-54.10 E-.86 SRI-63



Colonial Red
SR-36.60 E-.86 SRI-39



Terra Cotta
SR-39.37 E-.87 SRI-43



Forest Green*
SR-27.99 E-.84 SRI-27



Silver Ultramet*‡
SR-41.13 E-.85 SRI-43



Sierra Tan
SR-48.01 E-.87 SRI-55



Regal Blue*
SR-26.50 E-.84 SRI-25



Tahoe Blue*
SR-29.98 E-.84 SRI-29



Leafy Green*
SR-29.40 E-.85 SRI-29



Copper Ultramet*‡
SR-44.20 E-.88 SRI-50

SPECIAL ORDER COLORS - Longer lead times and Minimum orders may apply



Redi-Mix Red*
SR-40.80 E-.84 SRI-44



Burgundy*
SR-29.58 E-.86 SRI-30



Smokey Blue*
SR-34.57 E-.84 SRI-35



Antique Patina*‡
SR-33.15 E-.84 SRI-36



Sand Beige*
SR-56.20 E-.85 SRI-65



Marine Green*
SR-34.70 E-.85 SRI-36



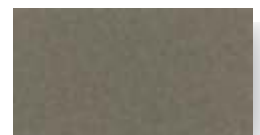
Hemlock Green*
SR-31.20 E-.84 SRI-31



Patina Green*
SR-41.90 E-.85 SRI-46



Moss Green*
SR-29.50 E-.83 SRI-28



Champagne*‡
SR-36 E-.83 SRI-37

*Premium colors, up-charge may apply

‡Metallic colors are batch sensitive and directional in nature

SR = Solar Reflectance Value TE = Thermal Emittance Value SRI = Solar Reflectance Index
Colors shown are approximate, please select from painted metal samples.

Call 1.800.826.7813 www.CustomBiltMetals.com

8/2021

PREMIUM OFFERINGS



Copper
SR-36 E-.83 SRI-37

SAVE MONEY — AND HELP SAVE THE ENVIRONMENT. HOW COOL IS THAT?

When you install a Custom-Bilt Metals roof with Cool Roof coating, you can save a significant amount of energy that adds up quickly. Even our darker colors meet ENERGY STAR® requirements, so you don't have to sacrifice design to have an energy efficient roof. As a result, you can save up to 20%* on the cost of cooling your home or business.

Cool Roof coatings contain a full 70% PVDF (Polyvinylidene fluoride) or Kynar 500® or Hylar® 5000 or Fluoropon®**. When applied to our specially prepared metal roofing products, Cool Roof colors possess outstanding color stability, fire resistance, chalk resistance and durability.

Choose Custom-Bilt Metals Cool Roof for all the right reasons — design flexibility, energy efficiency and cost savings. There's no other cool roof system that makes better sense.

Test	ASTM [†]	Performance
PHYSICAL PROPERTIES AND DURABILITY		
Film Thickness	D-1005, D-4138, D-1400	0.15 – 0.30 mil primer 0.7 – 0.9 mil topcoat
60° Specular Gloss	D-523	5-10
IR Reflectivity	E-903-96 E-1918-97 (Standard test method using portable Reflectometer)	0.25 (25%) minimum
Emissivity	C-1371-98 E-408-71	0.80 (80%) minimum
Pencil Hardness	D-3363	HB minimum
Flexibility, T-Bend	D-4145	1 – T aluminum 2 – T coated steel‡
Adhesion	D-3359	No adhesion loss
Reverse Impact	D-2794	No cracking or loss of adhesion
Abrasion, Falling Sand	D-968	65 – 85 1/mil
Mortar Resistance	C-267	No effect
Detergent Resistance, 3% Detergent, 100°F (72 hrs.)	D-2248	No effect
ATMOSPHERIC AND POLLUTANT RESISTANCE		
Acid Pollutants	D-1308 10% Muriatic Acid, (15 min.) 20% Muriatic Acid, (15 min.) AAMA 621 / AAMA 2605	No effect No effect <5 units color change
Acid Rain Test	Kesternich	15 cycles minimum, no objectionable color change
Alkali Resistance, 5% @ (72 hrs.)	20% Sodium Hydroxide (1 hr.)	No effect
Salt Spray Resistance 5% @ 95°F	B-117	Passes 3,000 hrs. – aluminum Passes 1,000 hrs. – coated steel‡
Humidity Resistance 100% @ 100°F	D-2247	Passes 3,000 hrs. – aluminum Passes 1,000 hrs. – coated steel‡
WEATHERING		
South Florida Exposure	D-2244	Less than 5 units color change
UV Exposure	D-4587	Passes 3,000 hrs.
Chalk Resistance	D-4214	Rating of 8 min.
Weatherometer	D-6695	



Bandon Dunes Golf Resort



Kauai, Hawaii

Call 1.800.826.7813 www.CustomBiltMetals.com

* Oak Ridge National Laboratory (ORNL).

** Kynar 500® is a registered trademark of Arkema, Inc., Hylar® 5000 is a registered trademark of Solvay Solexis, and Fluoropon® is a registered trademark of The Valspar Corporation

† All tests performed to the latest ASTM revision.

‡ Performances on G-90 Hot-Dipped Galvanized, Galvalume and other approved zinc/aluminum coated steel.

Reflectance values measured using a D&S Solar Reflectometer, values may vary between instruments and method.

Warranties of the product are exclusive as set forth in the applicable contract documents. Please see our website for warranty details.