

CUSTOM-BILT METALS

Brand Products

WS 100 / Wall & Soffit Panel



Table of Contents

SECTION	PAGE
Designer Notes	1
Panel Profiles	2
Soffit Details	
Soffit Trim	3
Soffit w/ 1 X 4 Framing	4
Soffit w/ Drip Edge at Fascia	5
Soffit Panel Splice	6
Wall Details	
Sill	7
Head	8
Jamb	9
Inside Corner	10
Outside Corner	11
Wall Splice	12
Panel over Subgirt	13
Base	14
Misc. Details	
Seam Stitch	15
Perforated Panel	16



Designer/Installer Notes

WS 100

GENERAL:

Custom-Bilt Metals (herein as CBM) is providing the following installation instructions and details as a guideline, and are CBM's recommended procedures. All local building codes and project specifications should be followed, however, in all cases, good roofing practices, and good workmanship should be employed when constructing a roofing system using CBM's products. These procedures and details are not intended to cover all instances, building requirements, designs, or codes. These details may require changes or revisions for each project, as conditions vary from project to project. The details provided are proven methods of construction. Work shall be performed by experienced craftsmen familiar with metal roofing and siding products and current industry standards. Sheet Metal and Air Conditioning Contractors National Association (SMACNA) architectural sheet metal manual shall govern material and workmanship not shown. Prefinished metals should not be required to have soldered joints because of expense and possible warranty violations by removing the coating system at the joint. Other joint designs and high quality sealants, gaskets and tapes are available and are recommended for prefinished metals.

METAL SIDING AND SOFFIT SYSTEM

CBM's wall / soffit systems are fabricated from Zinalume, G-90 galvanized steel, copper and aluminum. Various gauges are available; contact a CBM sales representative for details. Bare Zinalume (Zinalume Plus) is also available. The steel and aluminum panels are available prefinished in a Kynar 500 / Hylar 5000 paint system. The paint system consists of a baked-on epoxy primer (.2 mil.) and a baked-on PVDF finish coat (.8 mil.) totaling a nominal 1.0 mil. dry film thickness. All flashing and trim (unless requested otherwise) are of the same gauge and finish as the roof panels. Refer to your project specifications for actual requirements.

SEALANTS

Sealants not exposed to direct sunlight should consist of either an elastic butyl rubber tape or a non-skinning, non-drying gun-able butyl. Single part polyurethane's should be used when exposed to ultraviolet light. All sealants should be applied to clean, dry surfaces to ensure weather tightness. Sealants shall be installed as shown without voids.

SUBSTRATE:

Substrates may vary when dealing with a metal siding or soffit systems. The substrate must be on an even plane to avoid panel distortion. The plane of the substrate should not vary more than 1/4" in 20 feet. The WS 100 system can be installed over spaced structural members; contact a CBM sales representative for details.

VAPOR BARRIER

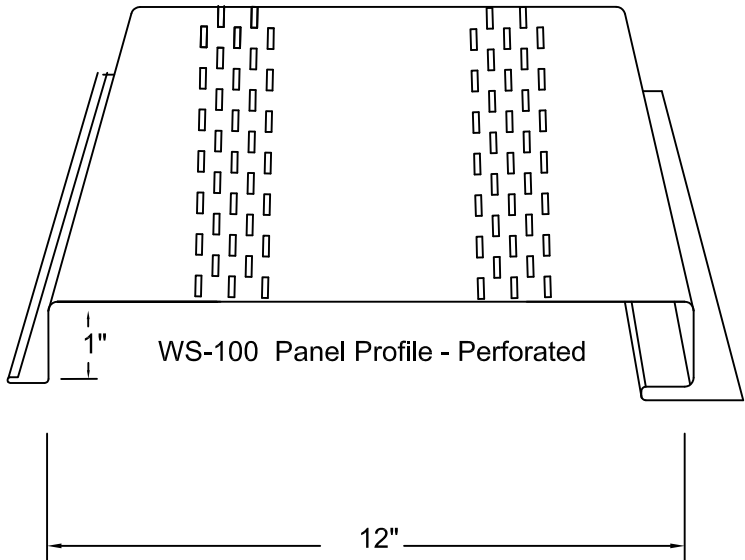
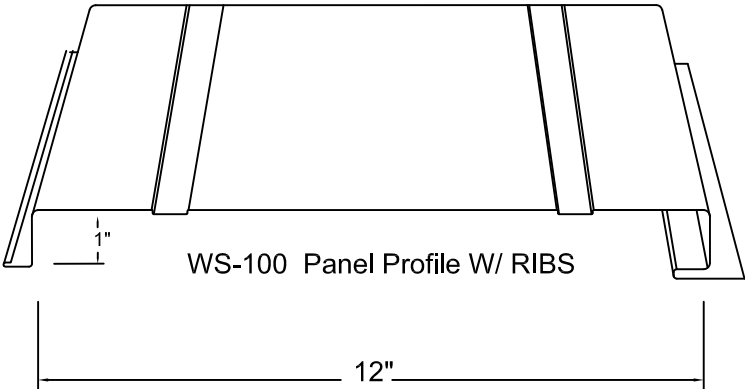
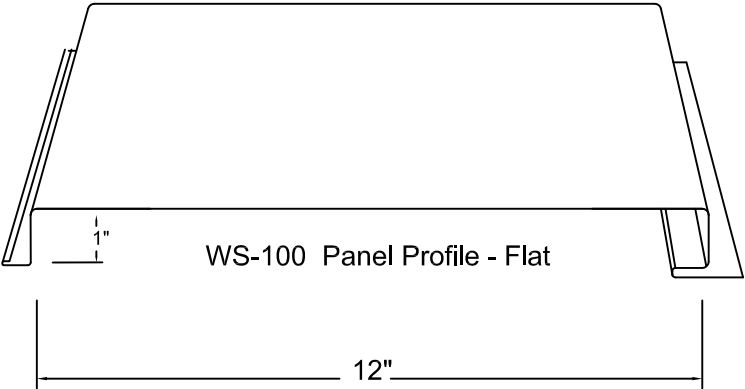
Depending on actual application, a vapor barrier / building wrap may be required. Consult local building codes. The underlayment used may depend on specific project conditions.

OIL CANNING

Flat metal panel surfaces will display some degree of waviness. This waviness is commonly referred to as "oil-canning". Oil canning is caused by a variety of conditions; steel mill tolerances, underlayments, and variations in the substrate, and installation practices. Oil canning is a characteristic of metal roofing, and not a cause for rejection. CBM recommends using stiffing ribs to help minimize or control the amount of oil canning.

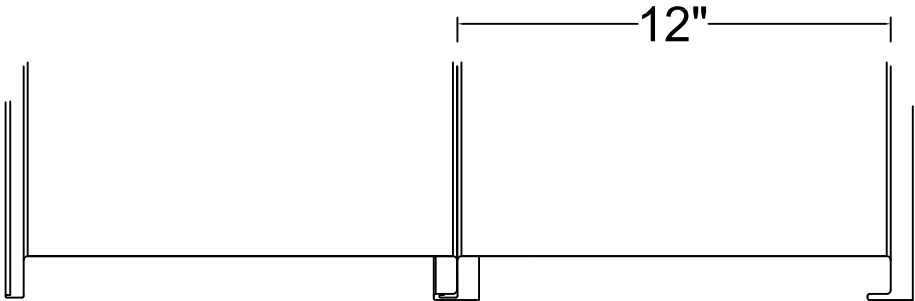
DELIVERY & STORAGE

Handle panels and bundles with care. Crated panels shall be lifted at blocked locations. Do not use ropes or wires for lifting. Long panels (25 ft. or more) may require two or more lift points to avoid bending or buckling of panels. Store panels in a dry, well ventilated area. Elevate one end of panels to allow for drainage of any moisture. Block panels off the ground. Do not store panels in direct contact with the ground. Do not allow strippable film to remain exposed to direct sunlight for an extended period of time. Remove strippable film prior to, or immediately after, installation of panels and flashing.

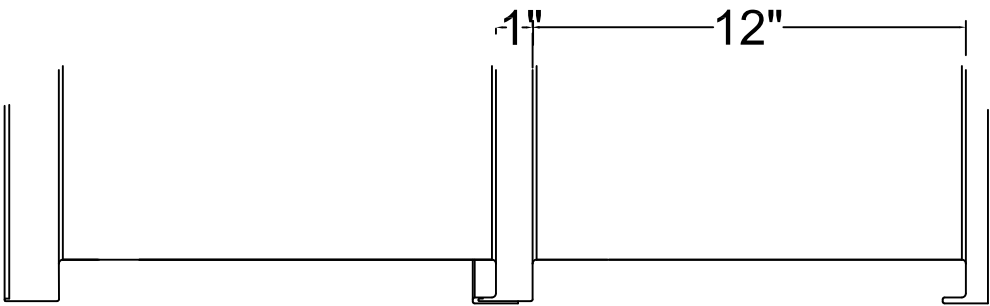


DRAWING: WS-100 Panel Profile

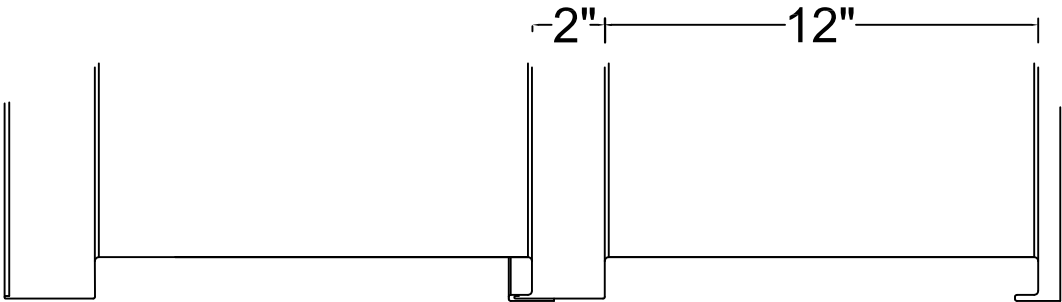
All Flashing and Trim available through CBM	Note:
SUBJECT TO CHANGE WITHOUT NOTICE	



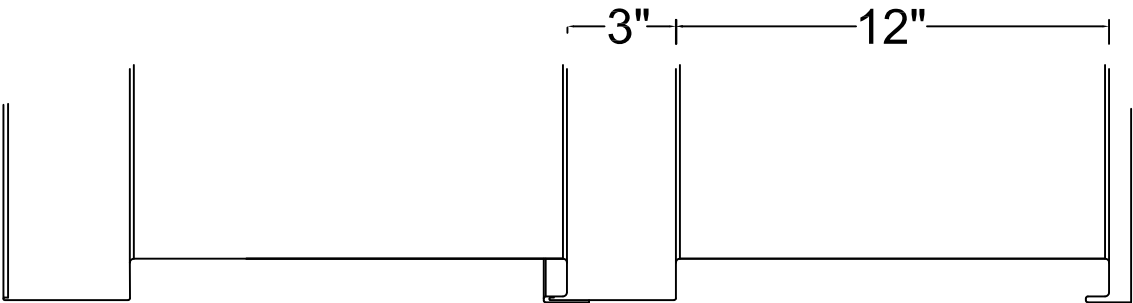
FLUSH



1" REVEAL



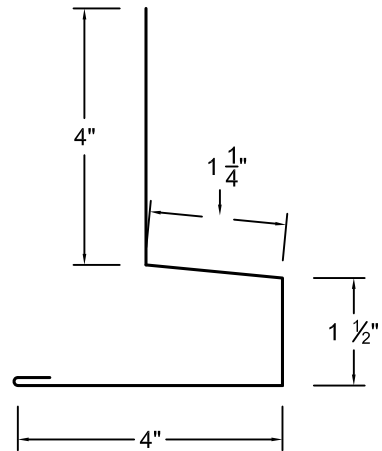
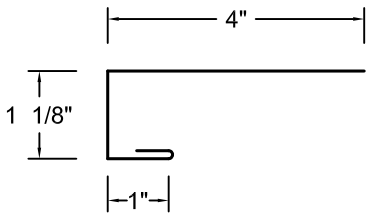
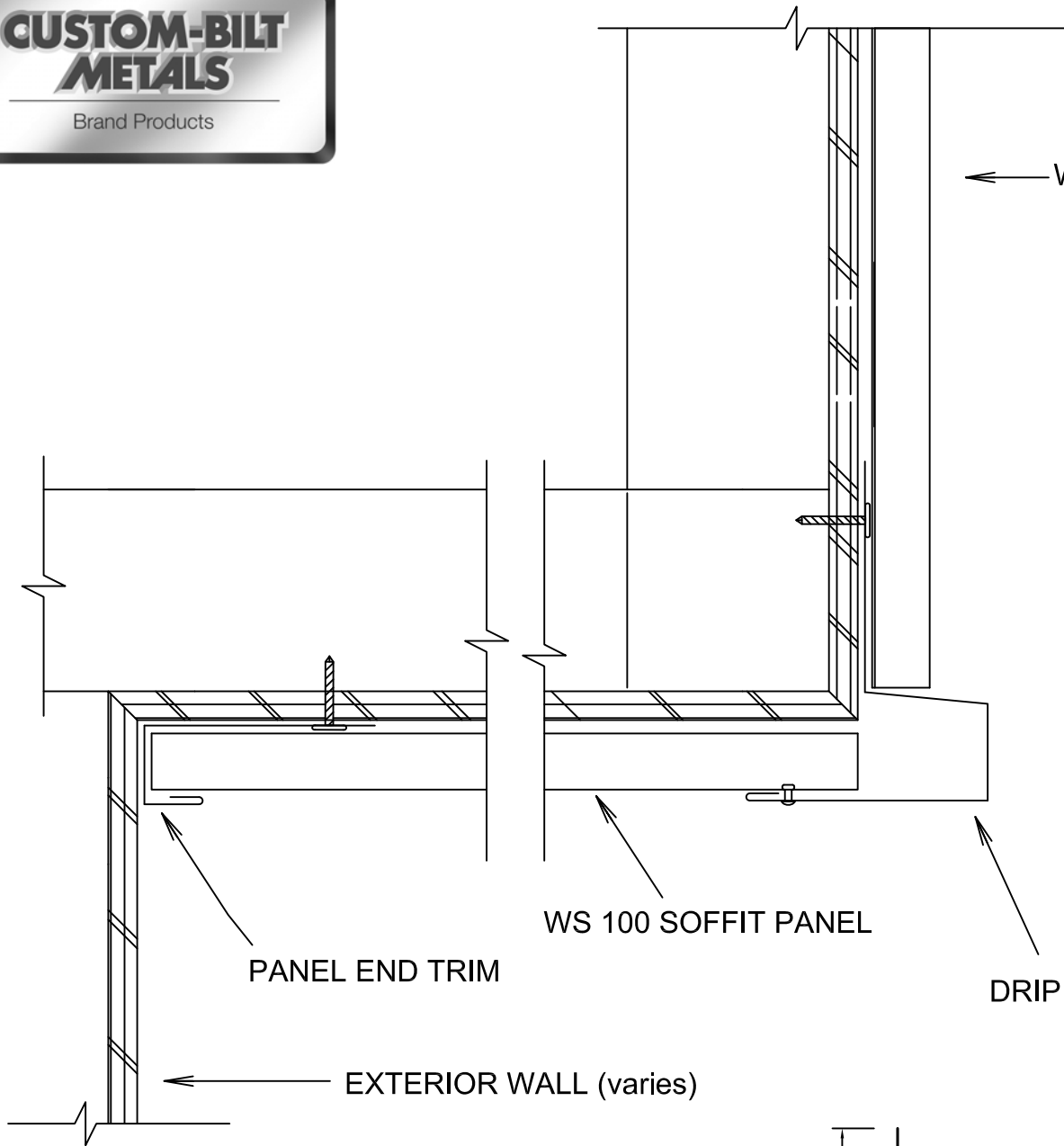
2" REVEAL



3" REVEAL

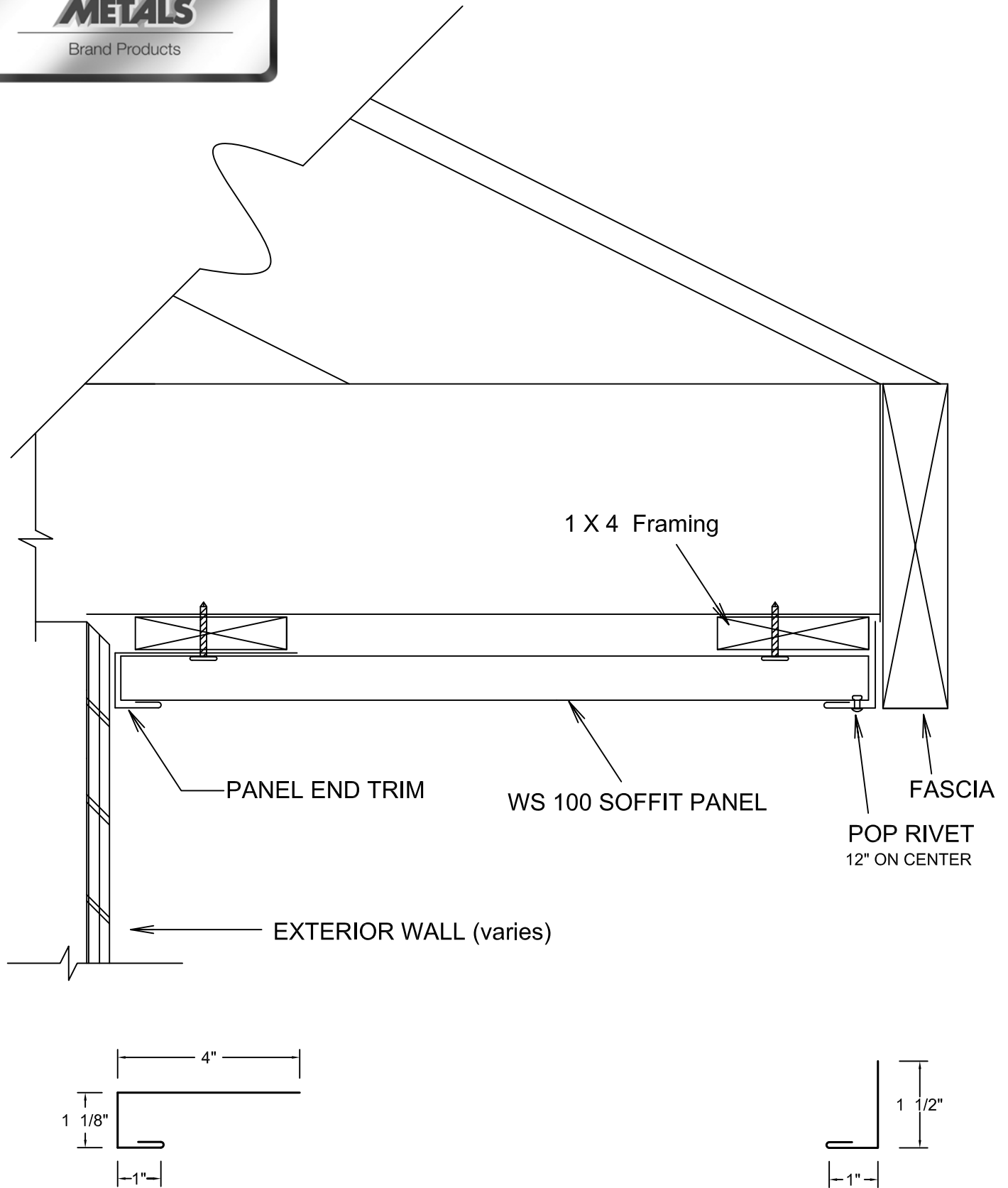
DRAWING: WS-100 Panel Profile w/reveal

All Flashing and Trim available through CBM	Note:
SUBJECT TO CHANGE WITHOUT NOTICE	



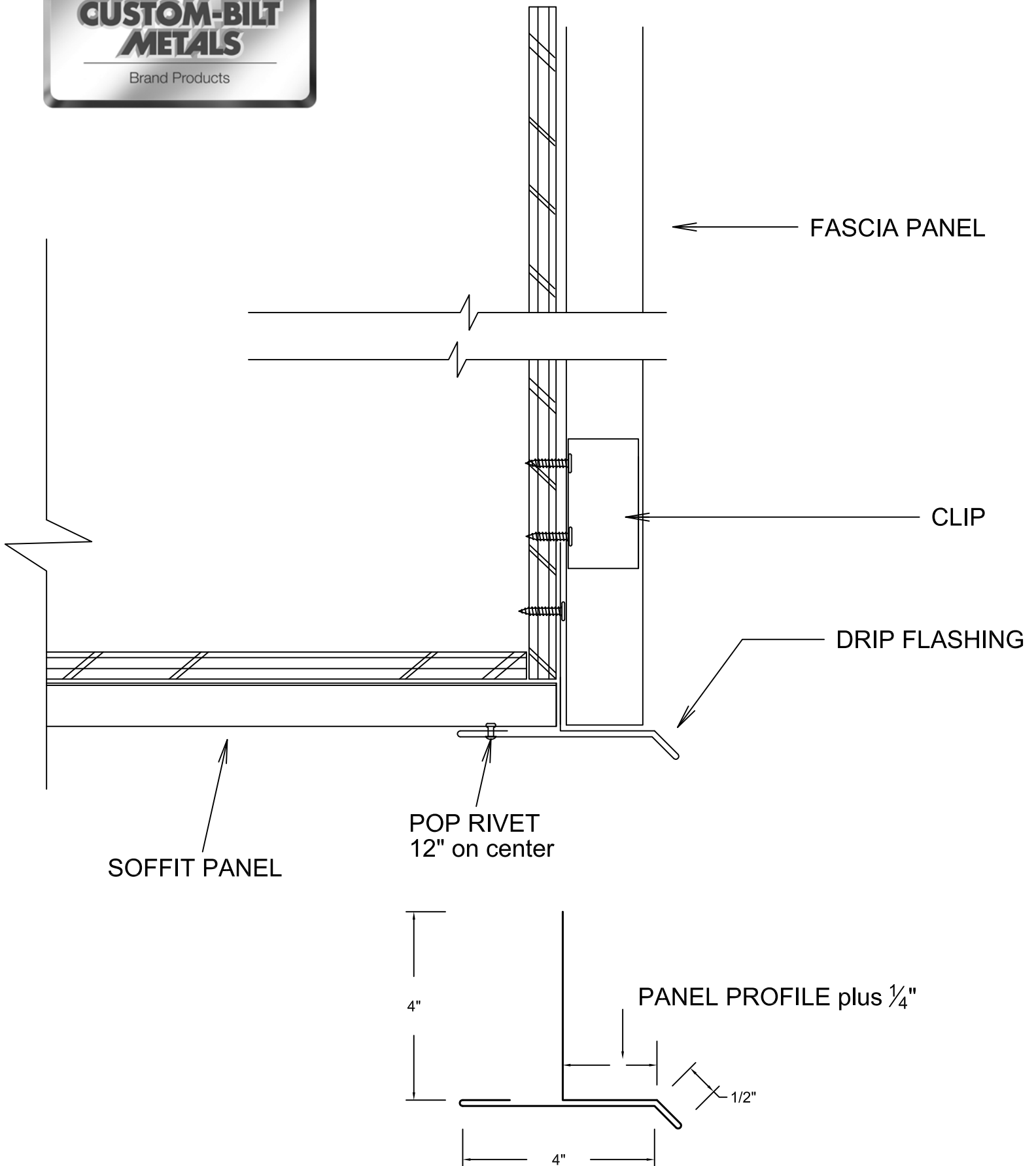
DRAWING: WS 2 Soffit

All Flashing and Trim available through CBM	Note:
SUBJECT TO CHANGE WITHOUT NOTICE	



DRAWING: WS 3 Soffit

All Flashing and Trim available through CBM	Note:
SUBJECT TO CHANGE WITHOUT NOTICE	

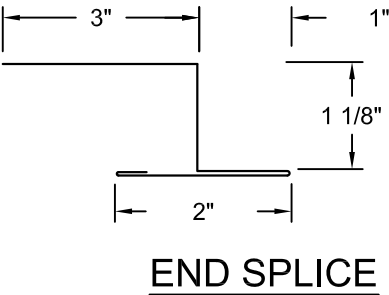
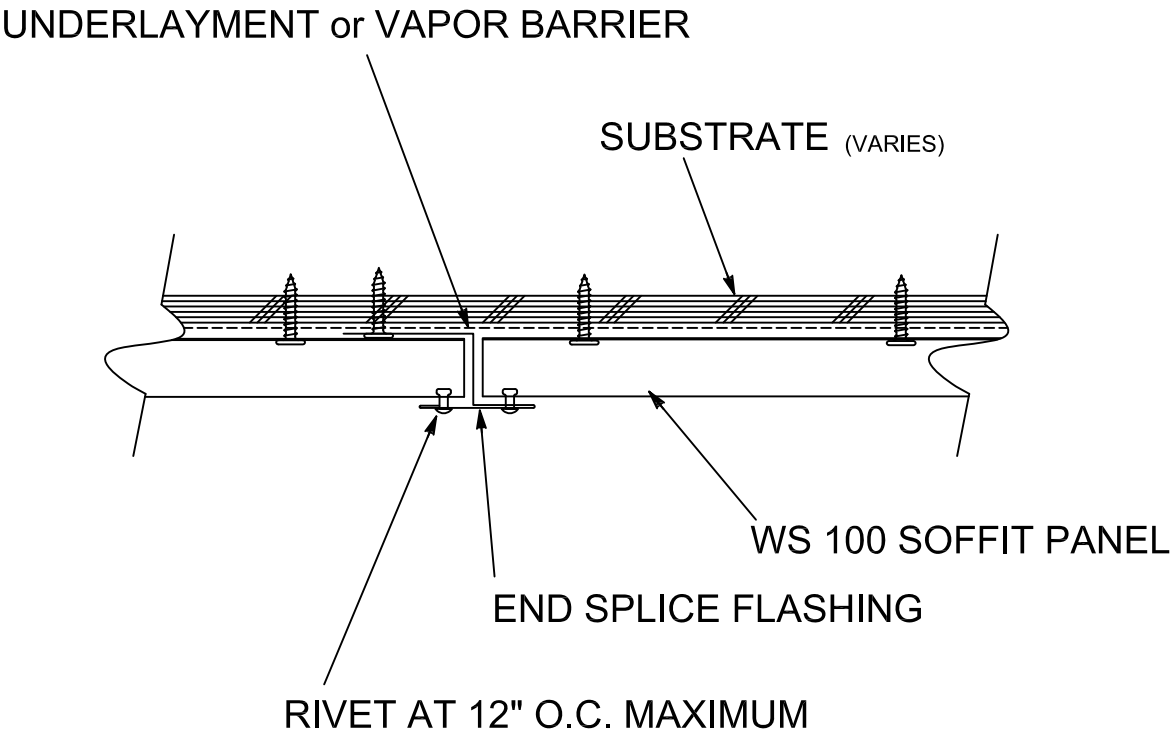


DRAWING: WS 5 Drip Edge at Fascia

All Flashing and Trim available through CBM

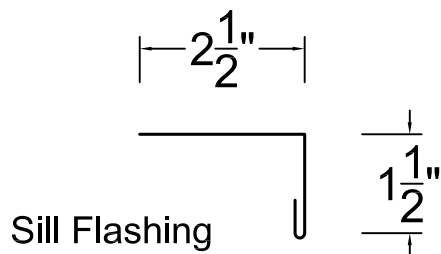
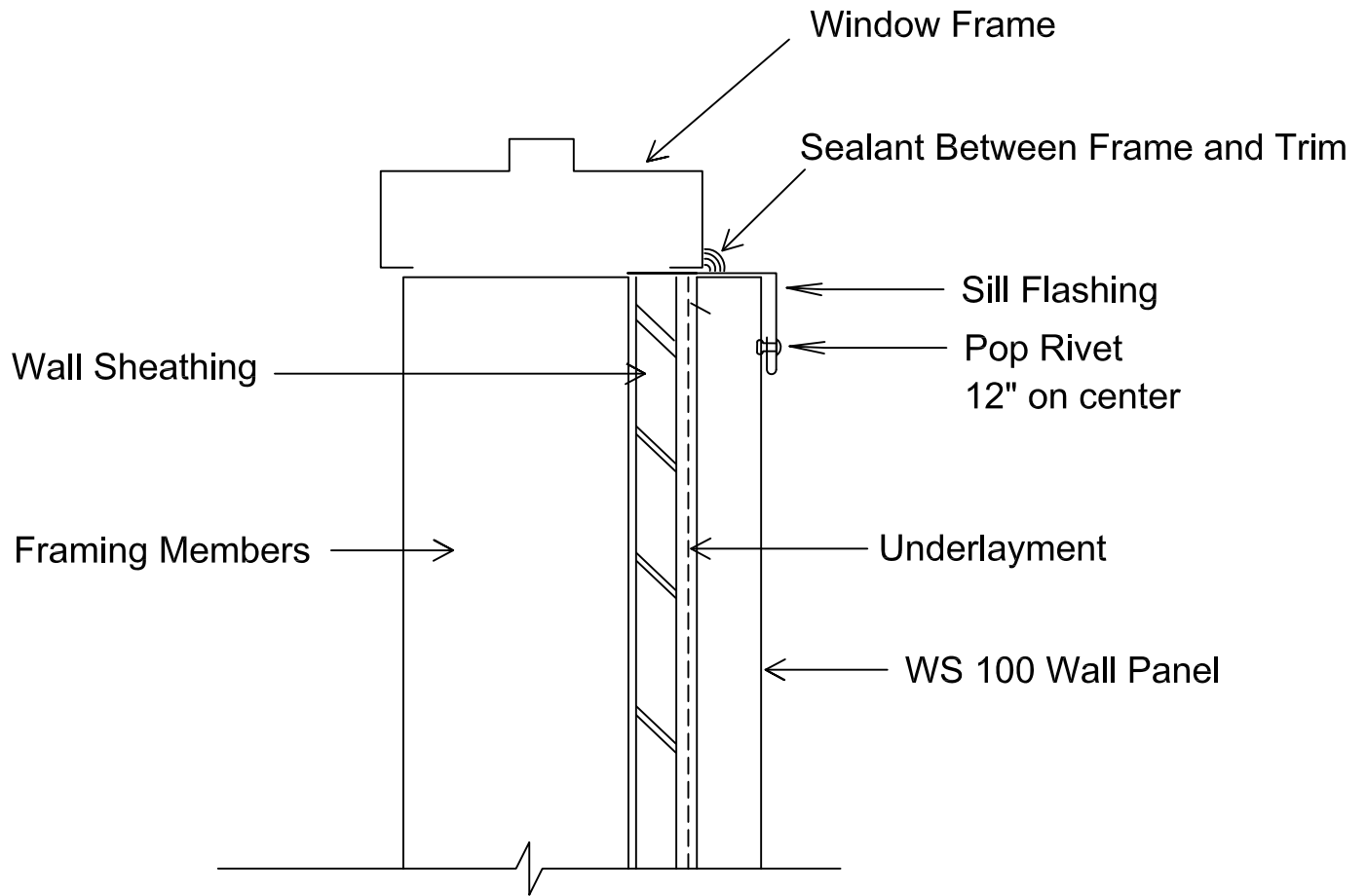
Note:

SUBJECT TO CHANGE WITHOUT NOTICE



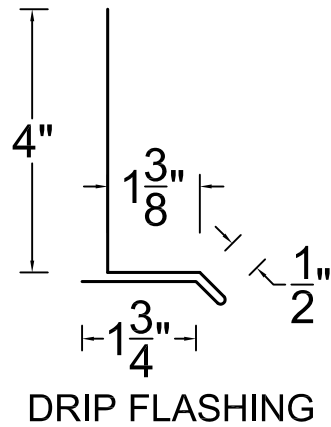
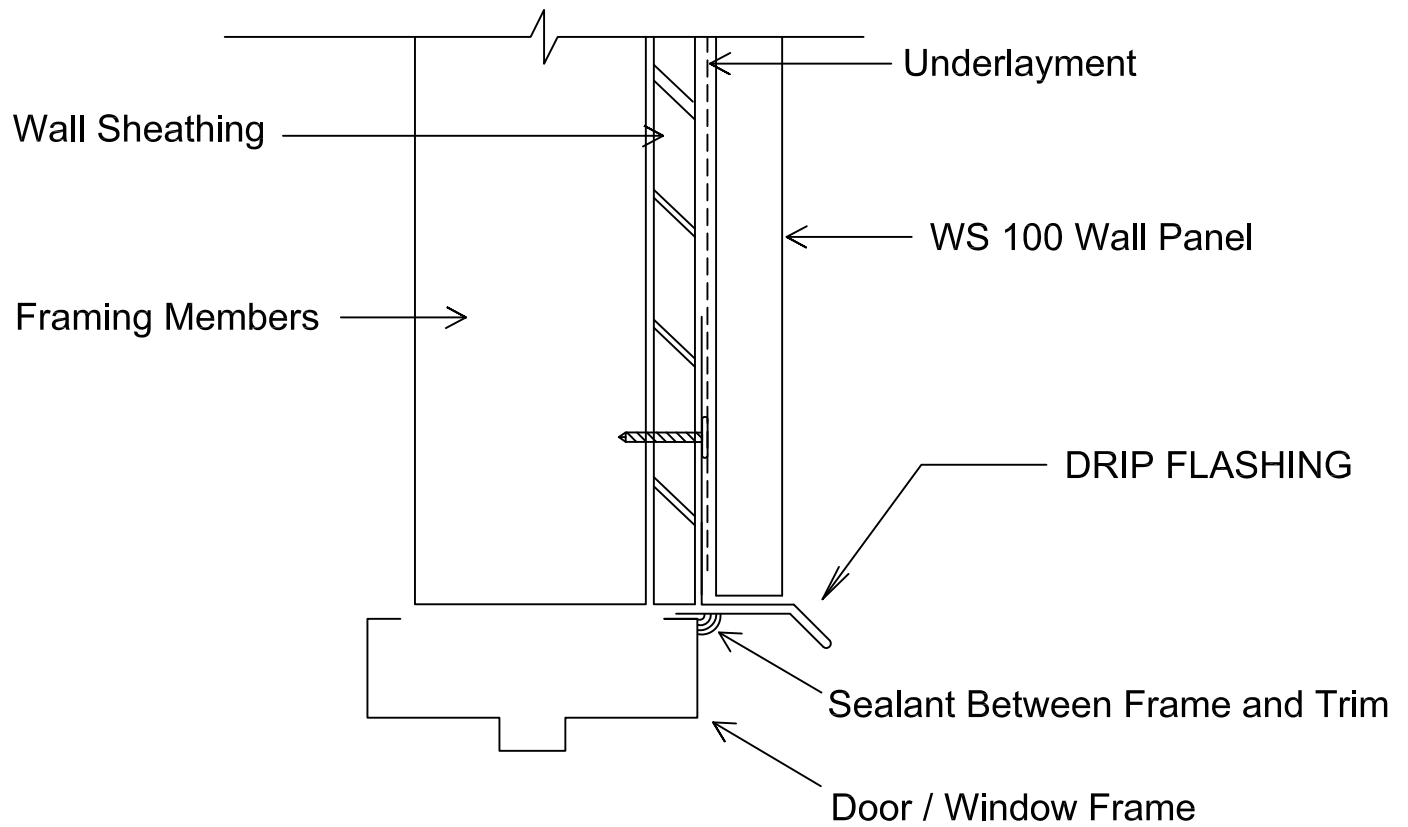
DRAWING: WS 6 Soffit splice

All Flashing and Trim available through CBM	Note:
SUBJECT TO CHANGE WITHOUT NOTICE	



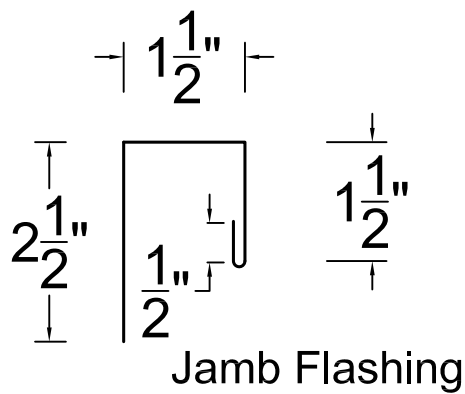
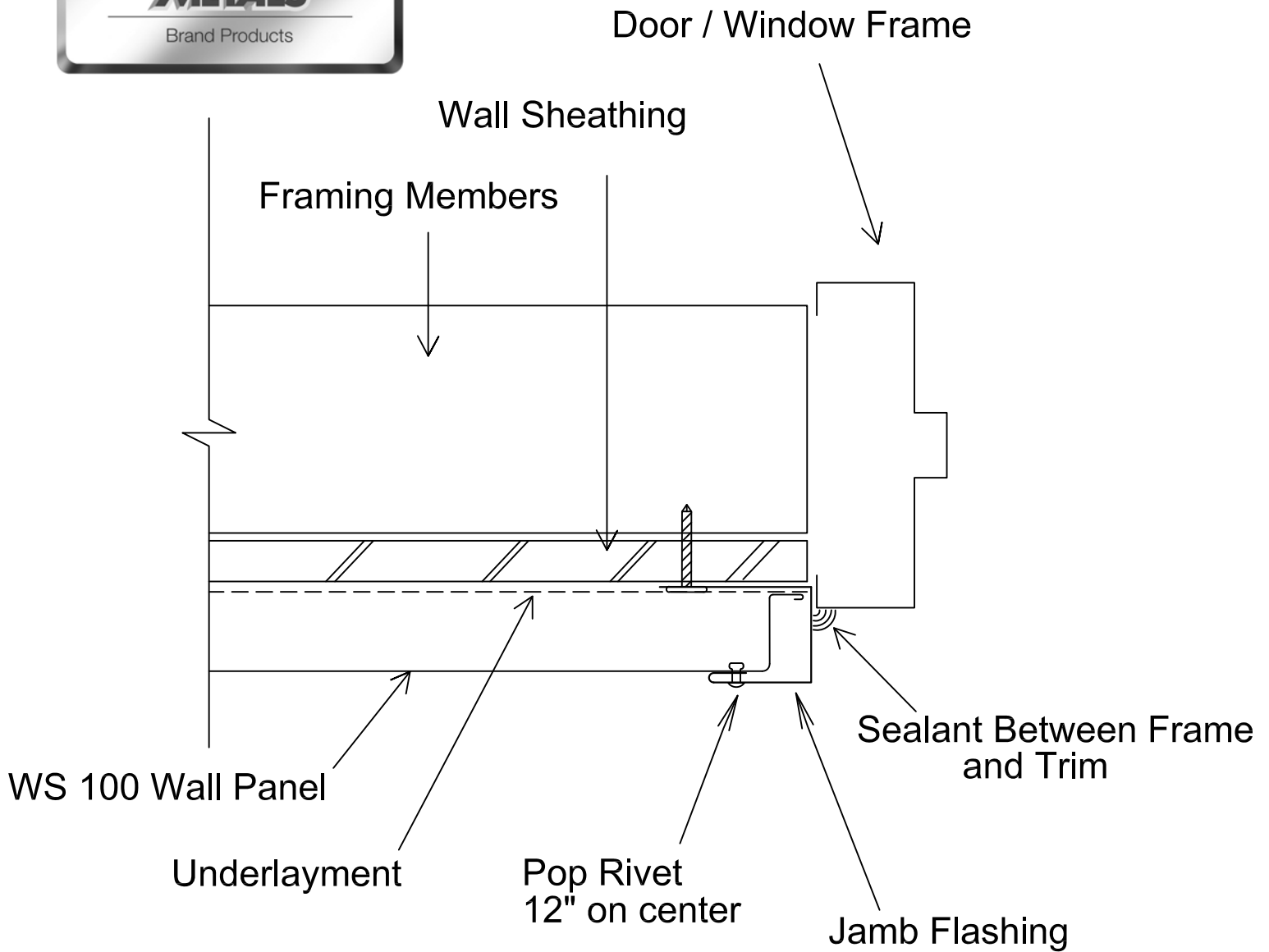
DRAWING: WS 7 Window Sill

All Flashing and Trim available through CBM	Note:
SUBJECT TO CHANGE WITHOUT NOTICE	



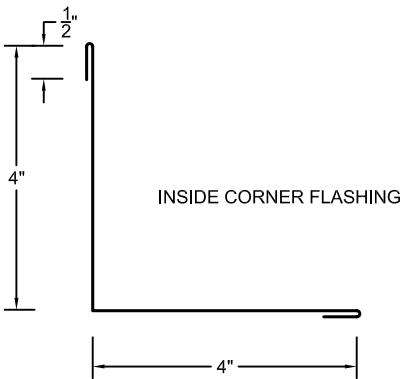
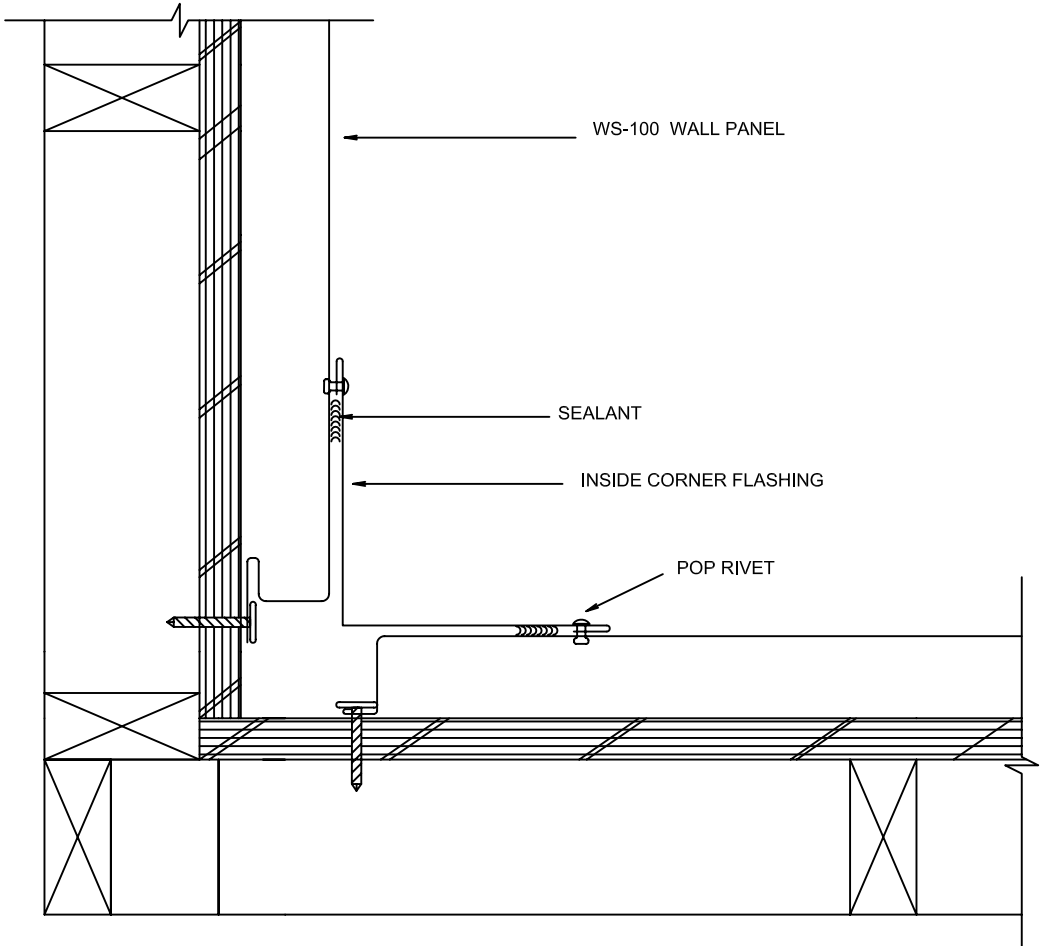
DRAWING: WS 8 Door / Window Head

All Flashing and Trim available through CBM	Note:
SUBJECT TO CHANGE WITHOUT NOTICE	



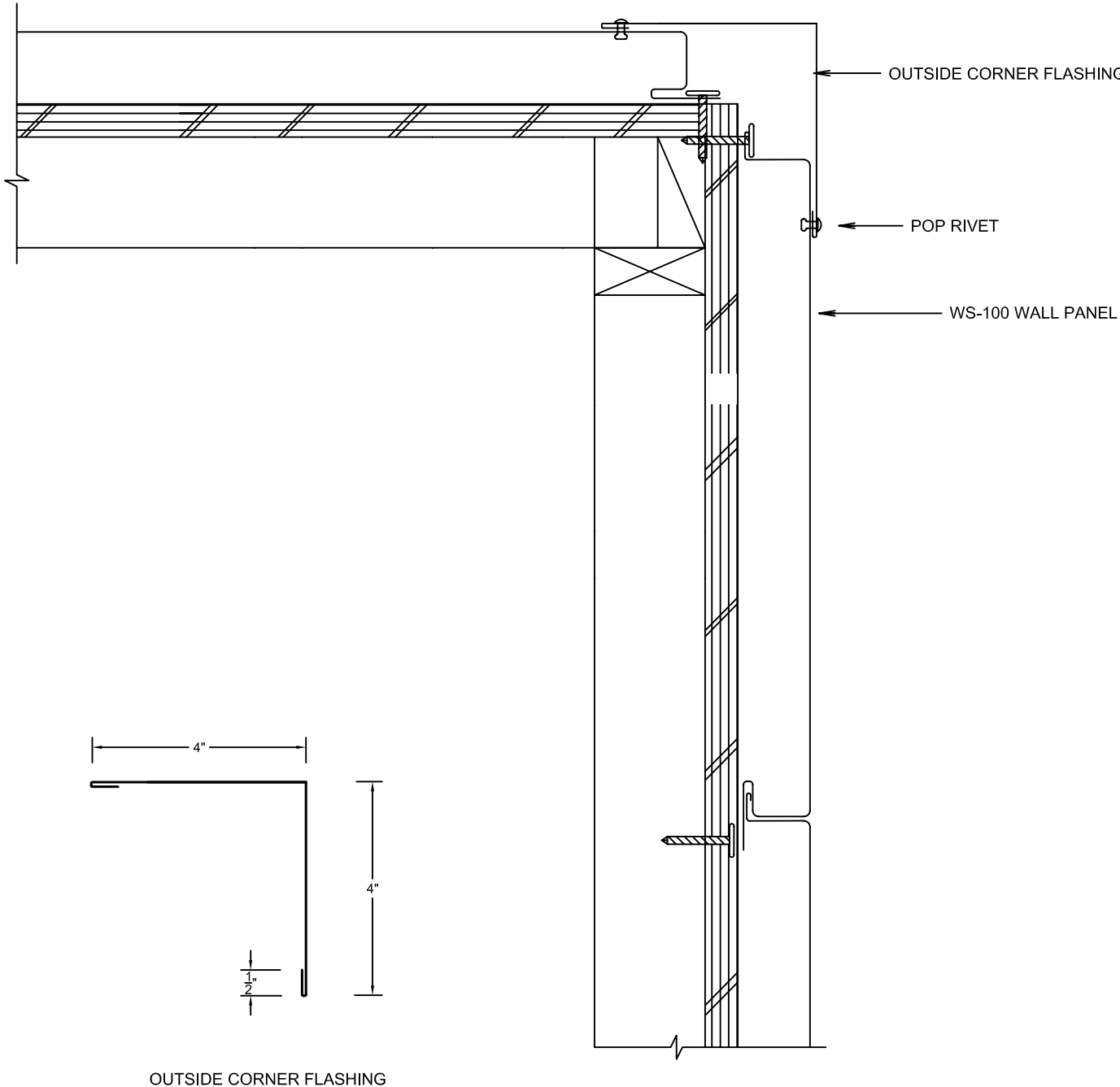
DRAWING: WS 9 Door / Window Jamb

All Flashing and Trim available through CBM	Note:
SUBJECT TO CHANGE WITHOUT NOTICE	



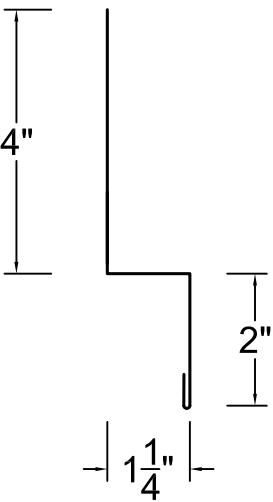
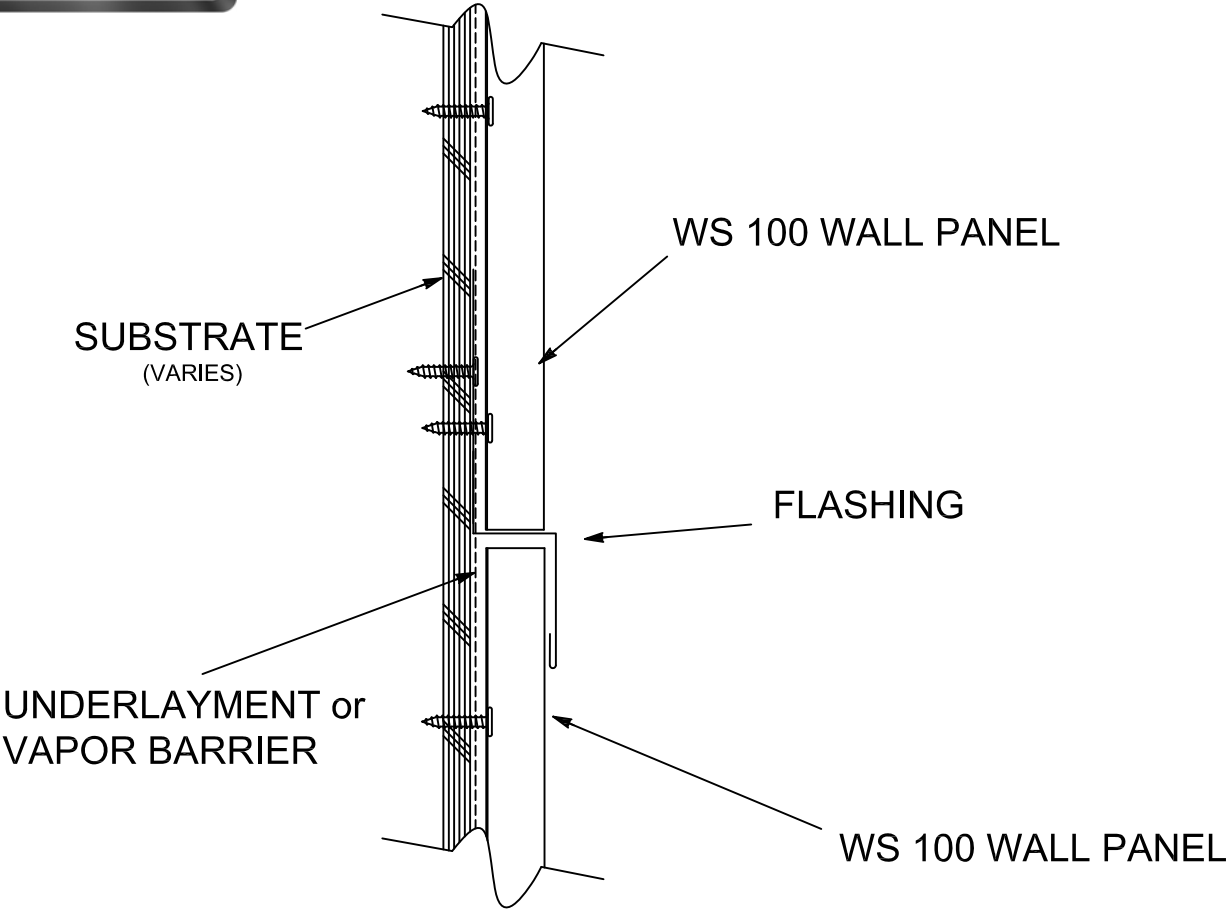
DRAWING: WS 10 Inside Corner

All Flashing and Trim available through CBM	Note:
SUBJECT TO CHANGE WITHOUT NOTICE	



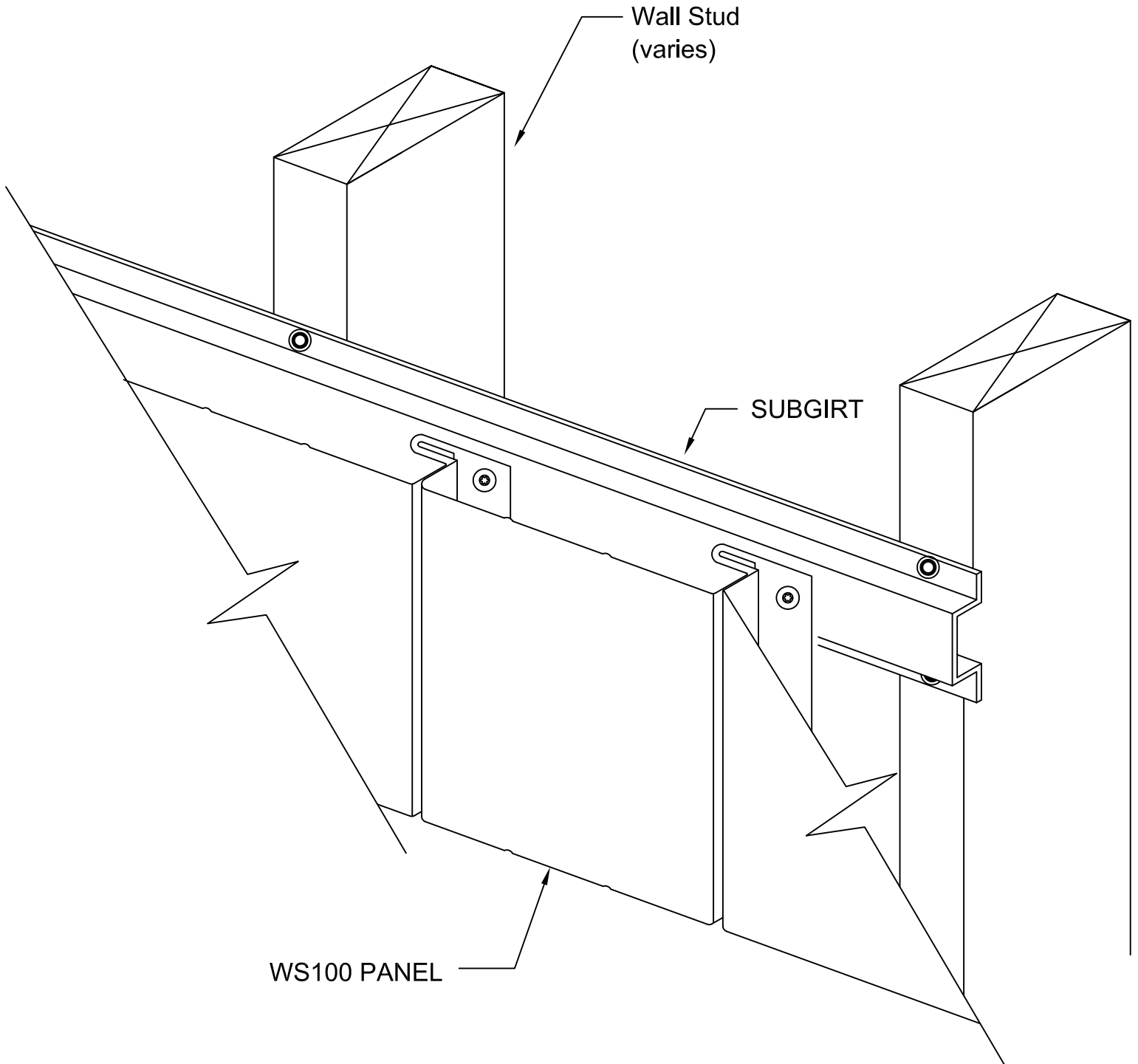
DRAWING: WS 12 OUTSIDE CORNER

All Flashing and Trim available through CBM	Note:
SUBJECT TO CHANGE WITHOUT NOTICE	



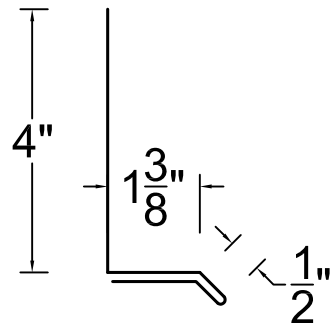
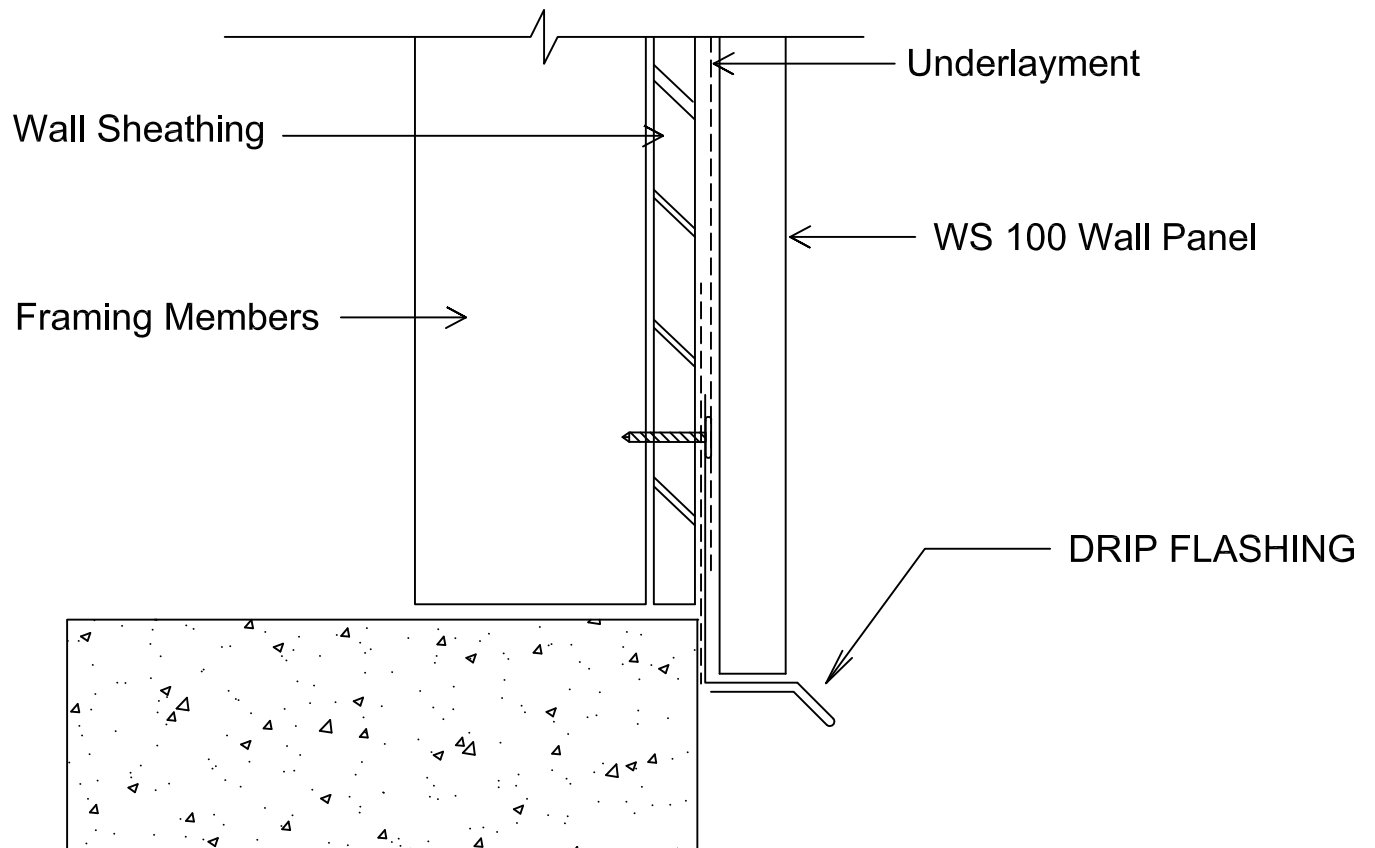
DRAWING: WS 14 WALL Splice

All Flashing and Trim available through CBM	Note:
SUBJECT TO CHANGE WITHOUT NOTICE	



DRAWING: WS 15 Subgirts

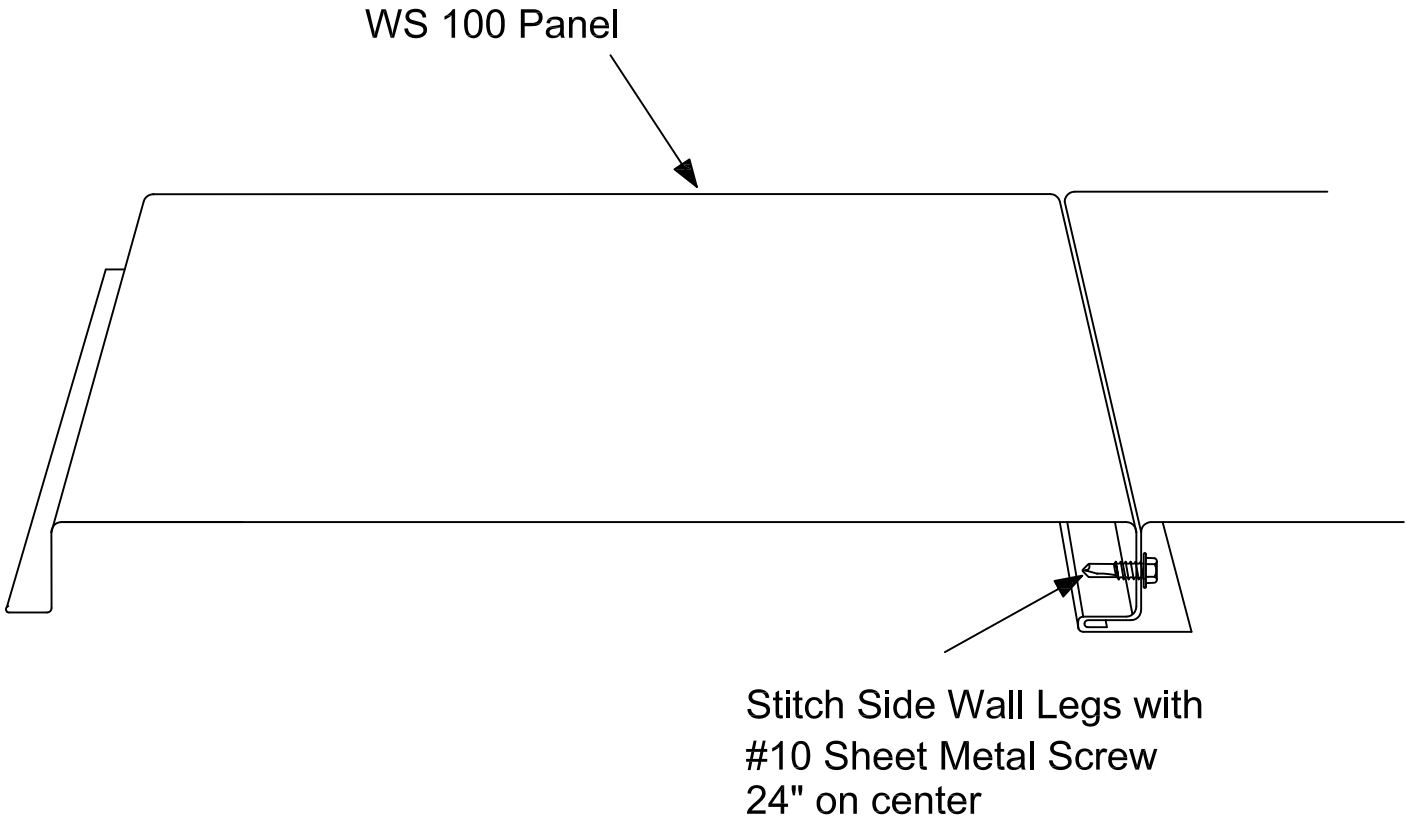
All Flashing and Trim available through CBM	Note:
SUBJECT TO CHANGE WITHOUT NOTICE	



DRIP FLASHING

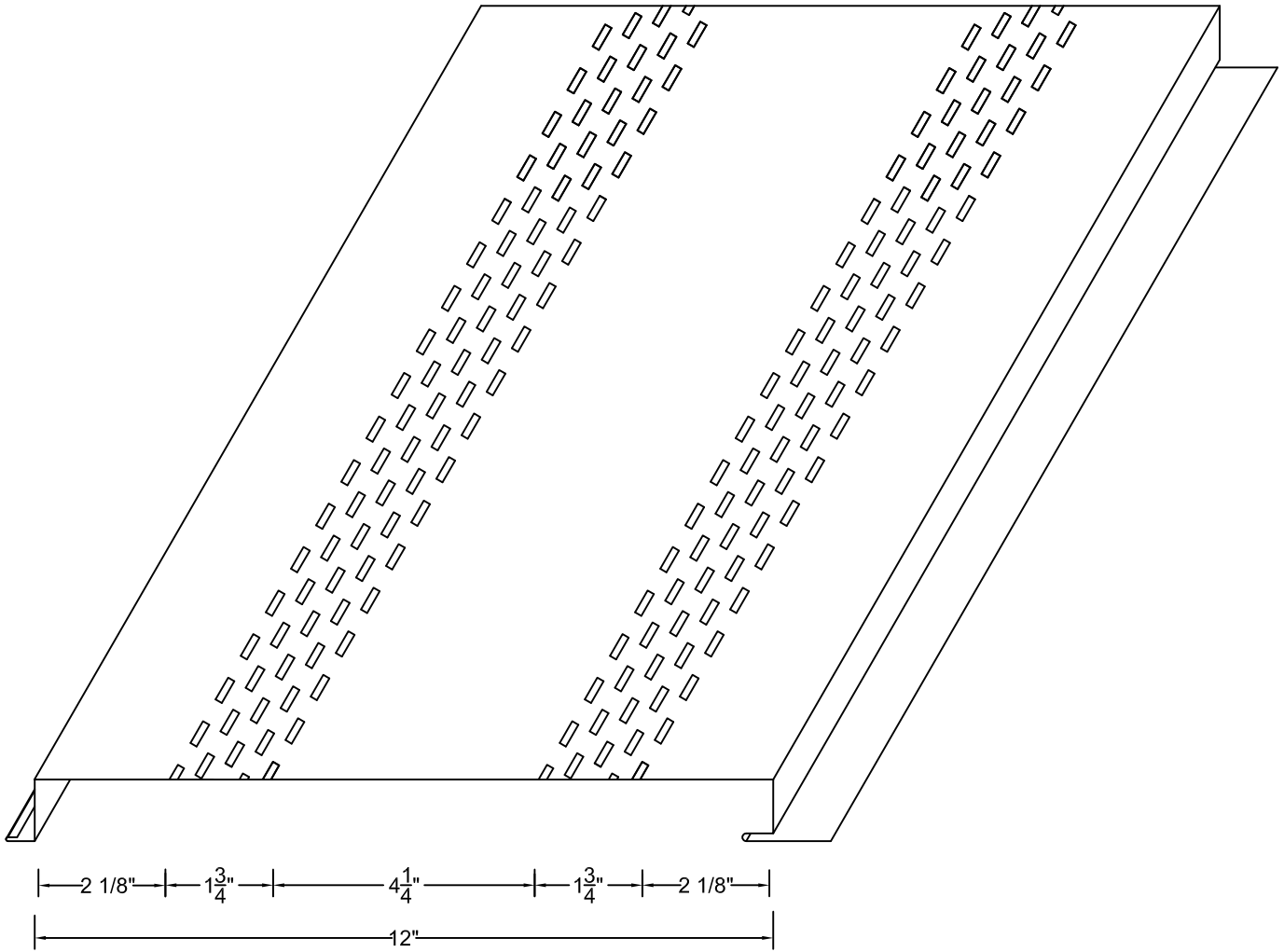
DRAWING: WS 1 Base

All Flashing and Trim available through CBM	Note:
SUBJECT TO CHANGE WITHOUT NOTICE	



DRAWING: WS-100

All Flashing and Trim available through CBM	Note:
SUBJECT TO CHANGE WITHOUT NOTICE	



DRAWING: WS-100 Panel Profile -Perforated

All Flashing and Trim available through CBM	Note: 7.25 SQ INCH NET FREE AREA PER LIN.FT.
SUBJECT TO CHANGE WITHOUT NOTICE	