

CUSTOM-BILT METALS

Brand Products

CONTOUR CORRUGATED PANEL



Table of Contents

SECTION	PAGE
Designer Notes	1
Panel Net Coverage / Fasteners	2
ROOF Details	
Eave w/ Gutter	3
Ridge	4
Hip	5
Rake	6
Sidewall	7
Endwall	8
Valley	9
Panel End Lap	10
Wall Details - Horizontal / Vertical	
Base / Drip	11
Inside Corner – Corrugated to Corrugated	12
Inside Corner – Corrugated to Other	13
Outside Corner	14
Door / Window Head	15
Door / Window Jamb	16
Window Sill	17
Pipe Flashing	18

Designer/Installer Notes

Contour Corrugated 7/8"

GENERAL

Custom-Bilt Metals (herein as CBM) is providing the following installation instructions and details as a guideline, and are CBM's recommended procedures. All local building codes and project specifications should be followed, however, in all cases, good roofing practices, and good workmanship should be employed when constructing a roofing system using CBM's products. These procedures and details are not intended to cover all instances, building requirements, designs, or codes. These details may require changes or revisions for each project, as conditions vary from project to project. The details provided are proven methods of construction. Work shall be performed by experienced craftsmen familiar with metal roofing products and current industry standards. Sheet Metal and Air Conditioning Contractors National Association (SMACNA) architectural sheet metal manual shall govern material and workmanship not shown. Prefinished metals should not be required to have soldered joints because of expense and possible warranty violations by removing the coating system at the joint. Other joint designs and high quality sealants, gaskets and tapes are available and are recommended for prefinished metals. Recommended minimum roof slope is 3:12.

METAL ROOF SYSTEM

CBM's roof systems are Zinalume, G-90 galvanized steel, copper and aluminum. Various gauges are available; contact a CBM sales representative for details. Bare Zinalume (Zinalume Plus) is also available. The steel and aluminum panels are available prefinished in a Kynar 500 / Hylar 5000 paint system. The paint system consists of a baked-on epoxy primer (.2 mil.) and a baked-on PVF2 finish coat (.8 mil.) totaling a minimal 1.0 mil. dry film thickness. All flashing and trim (unless requested otherwise) are of the same gauge and finish as the roof panels. Refer to your project specifications for actual requirements.

SEALANTS

Sealants not exposed to direct sunlight should consist of either an elastic butyl rubber tape or a non-skinning, non-drying gun-able butyl. Single part polyurethane's should be used when exposed to ultraviolet light. All sealants should be applied to clean, dry surfaces to ensure weather tightness. Sealants shall be installed as shown without voids.

SUBSTRATE

Contour may be installed on solid substrate and or open framing systems. The distance the panel can span and the fasteners used will vary depending on design criteria of any given building. The substrate must be on an even plane to avoid panel distortion. The plane of the substrate should not vary more than 1/4" in 20 feet. Some design issues to consider are live load, snow load, wind design, etc. Contact a CBM sales representative for details.

UNDERLAYMENT

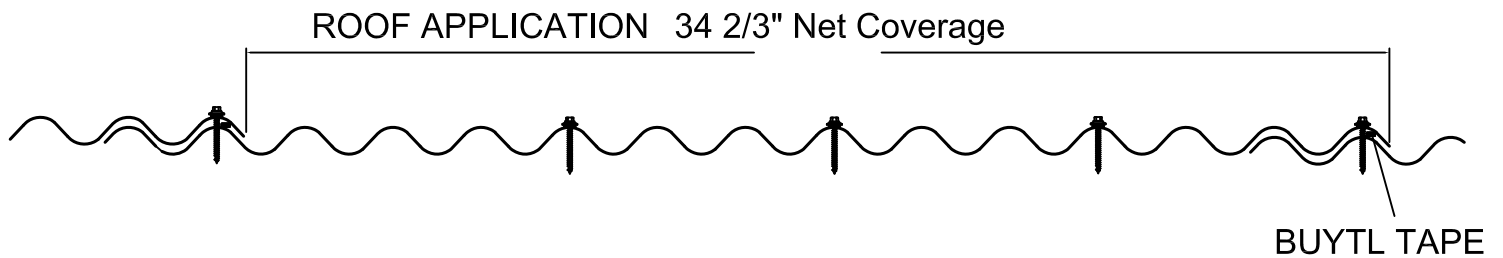
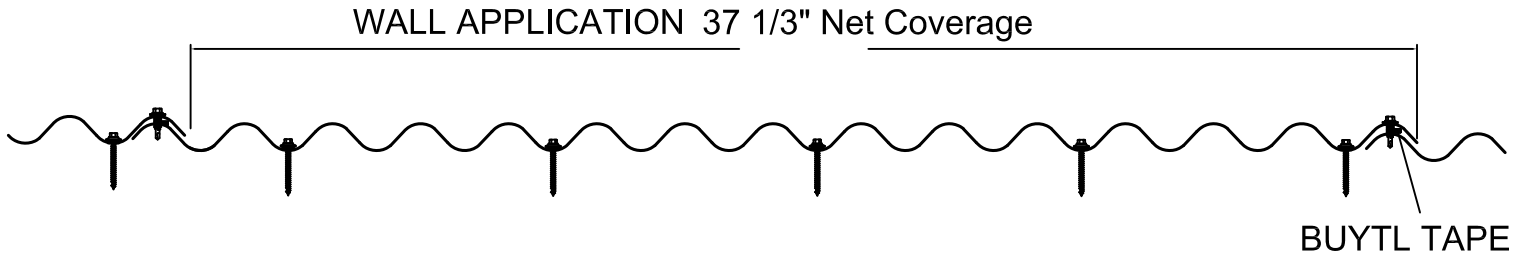
For roof applications CBM recommends a 40 mil high temperature self-adhering rubberized membrane. The underlayment used may depend on specific project conditions. For wall applications the use of a high quality vapor barrier will be required.






DELIVERY & STORAGE

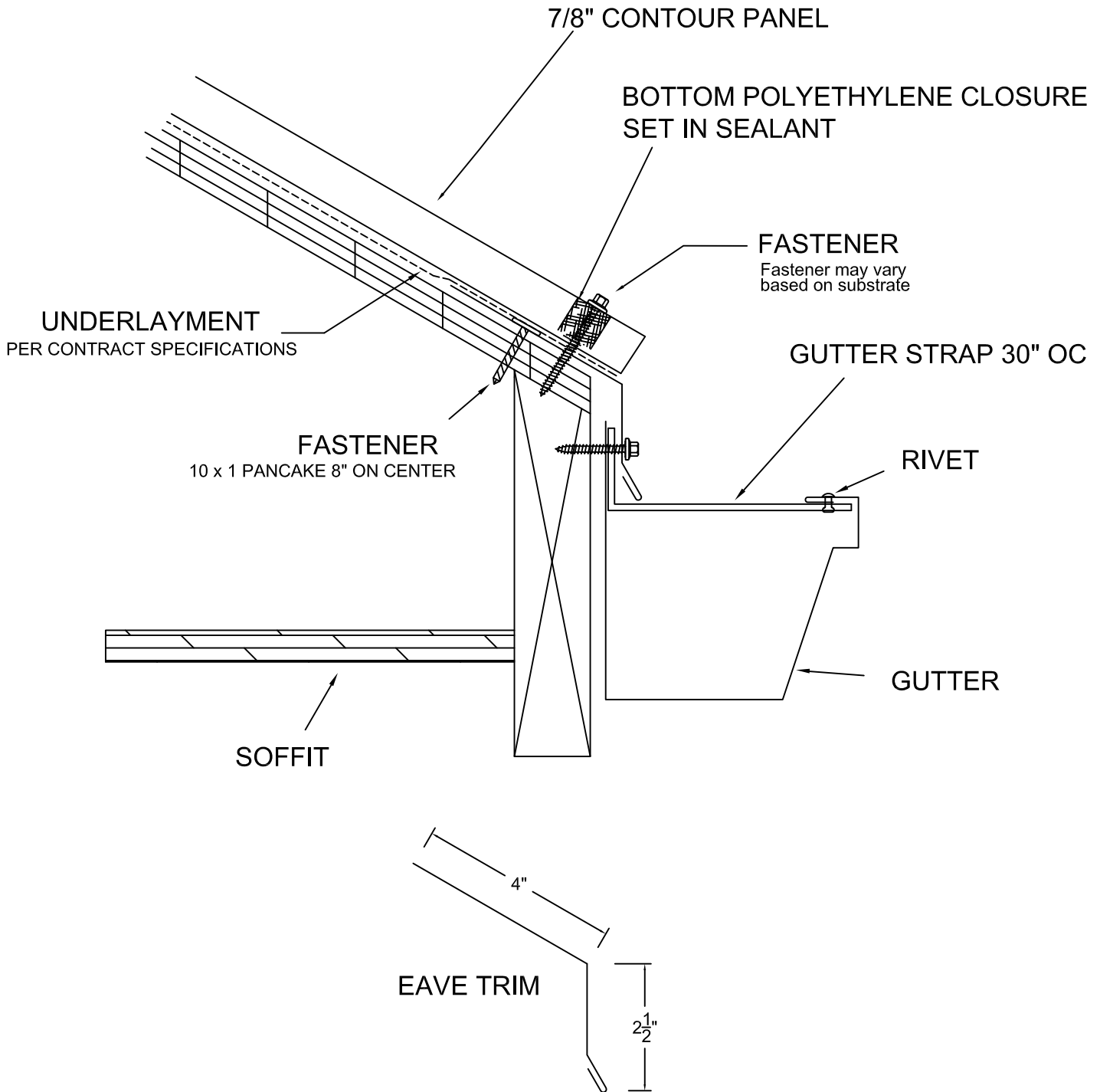
Handle panels and bundles with care. Crated panels shall be lifted at blocked locations. Do not use ropes or wires for lifting. Long panels (25 ft. or more) may require two or more lift points to avoid bending or buckling of panels. Store panels in a dry, well ventilated area. Elevate one end of panels to allow for drainage of any moisture. Block panels off the ground. Do not store panels in direct contact with the ground.



5 FASTENER LAYOUT

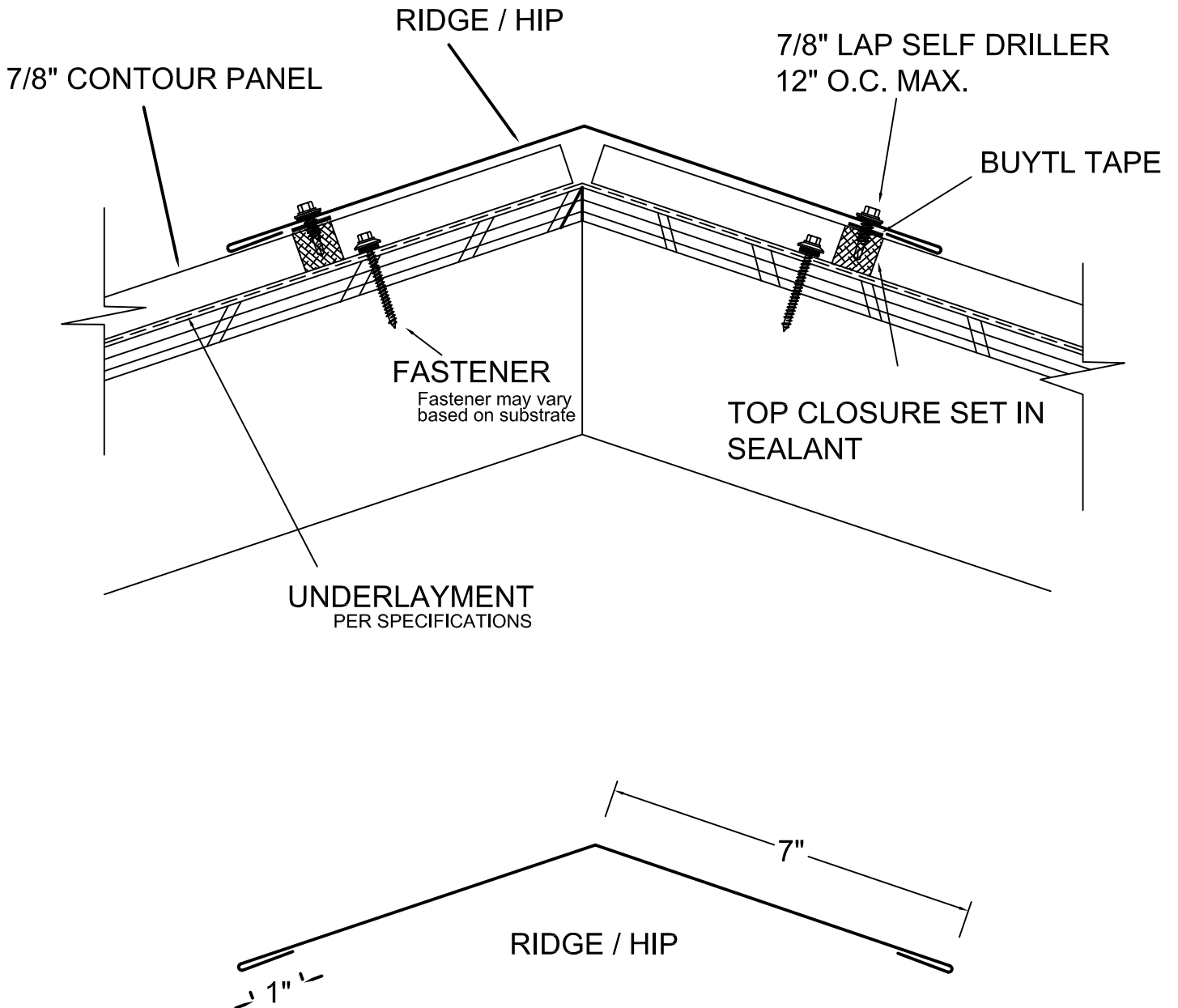


	#9x1", 1 1/2", 2", 2 1/2", 3" WOOD SCREW 1/4" HEX HEAD	PANEL TO DIMENSIONAL LUMBER.
	#14x1", 1 1/2", 2", 2 1/2" WOOD SCREW 5/16" HEX HEAD	PANEL TO PLYWOOD MIN. 1/2" THICK, STRUCTURAL GRADE
	#14x7/8" LAP SELF DRILLER 5/16" HEX HEAD	TRIM AND SIDE LAP ATTACHMENTS
	STST-43 STAINLESS STEEL RIVET 1/8 x 1/8	TRIM TO TRIM OR TRIM TO PANEL ATTACHMENTS
	#12x1", 1 1/2", 2", 2 1/2" SELF DRILLER 5/16" HEX HEAD	PANEL TO PURLIN OR DECK ATTACHMENTS



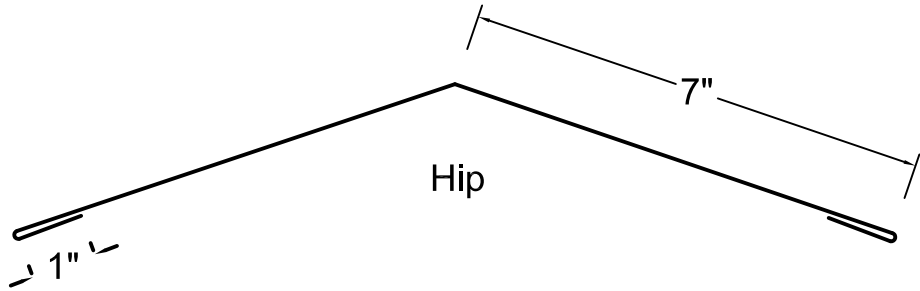
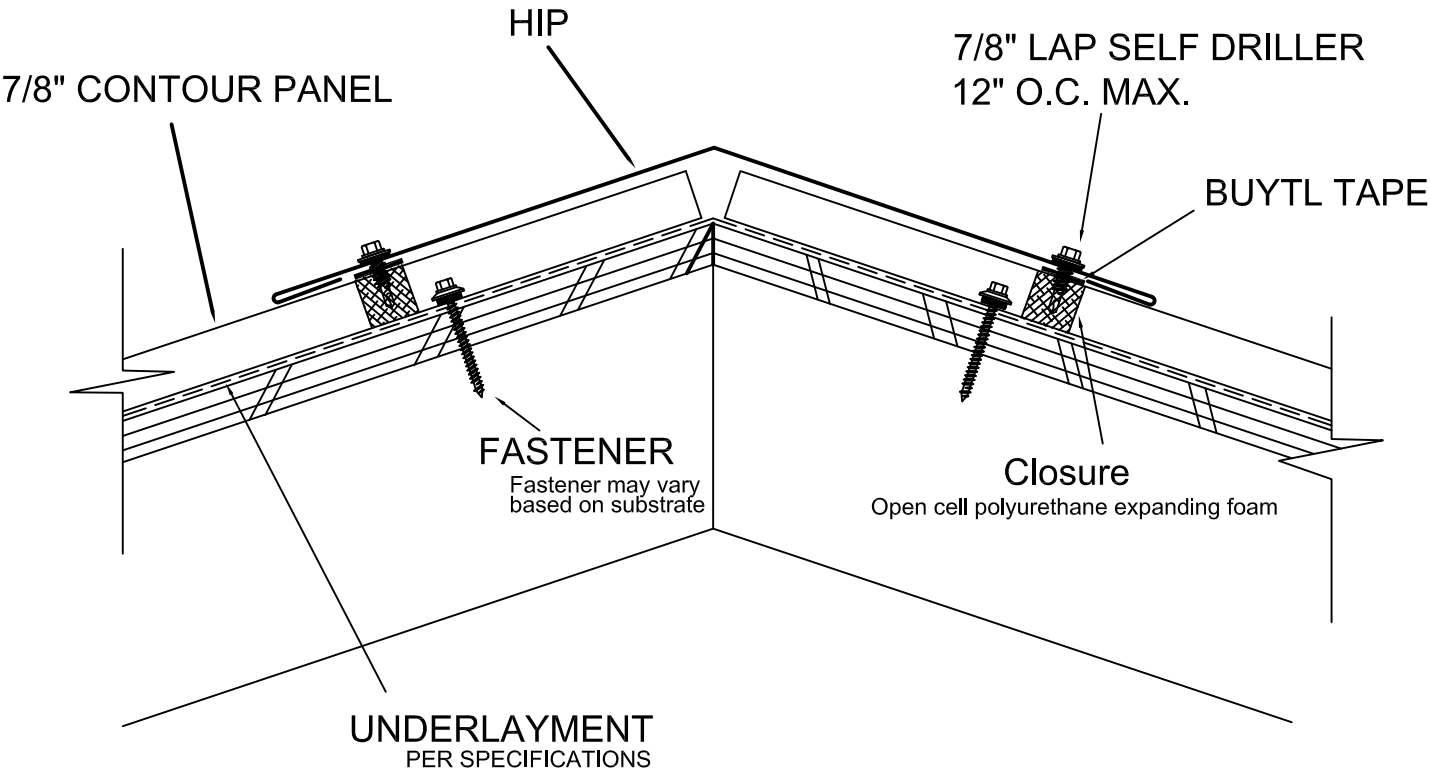
DRAWING: 7/8 " EAVE

All Flashing and Trim available through CBM	Note:
SUBJECT TO CHANGE WITHOUT NOTICE	



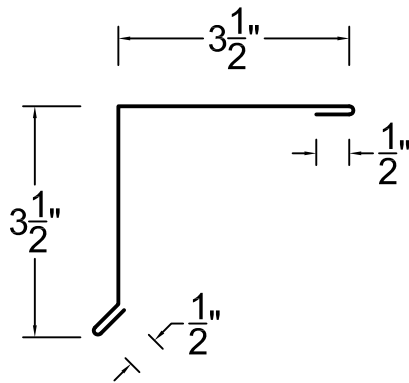
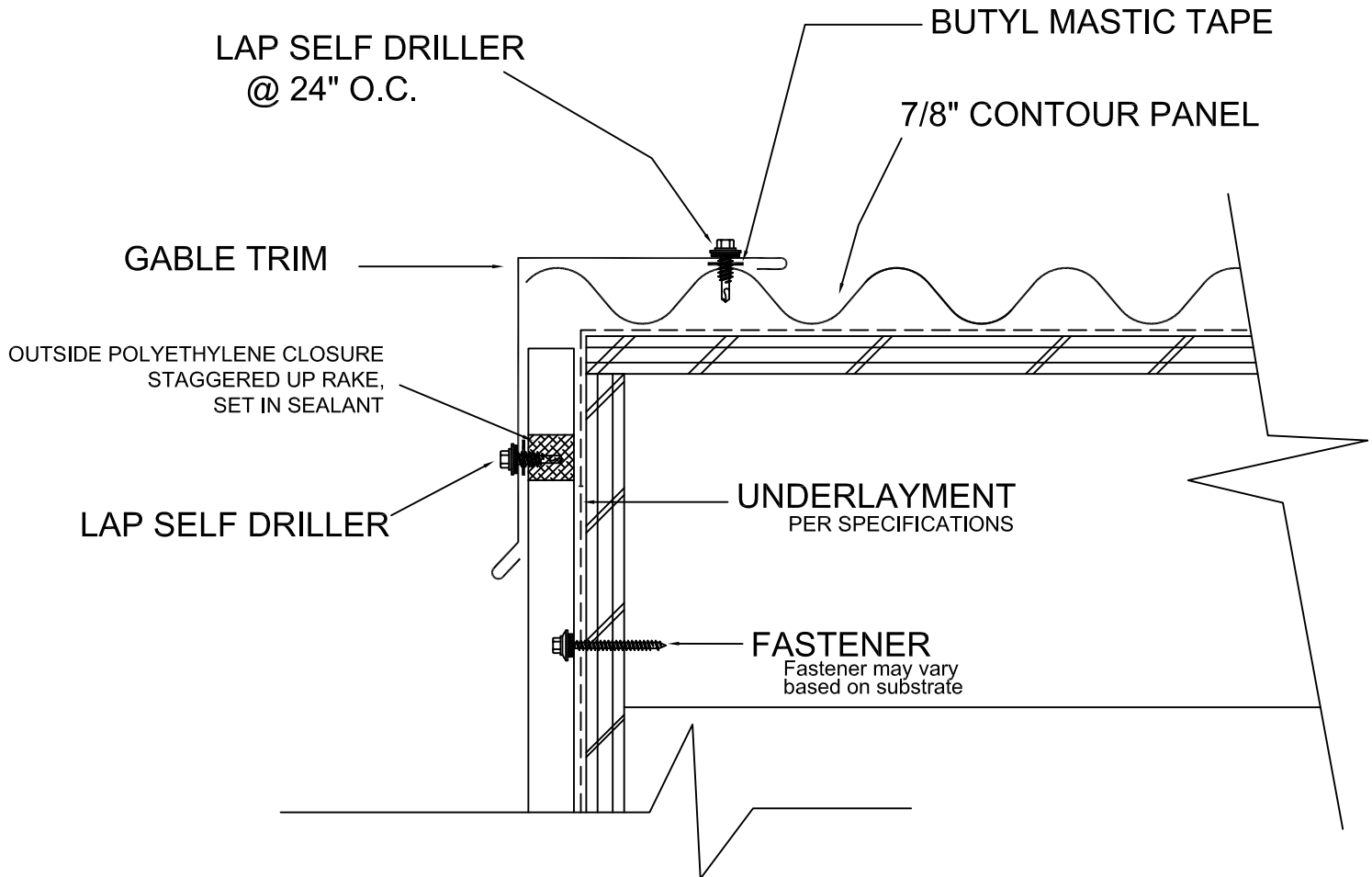
DRAWING: 7/8" RIDGE

All Flashing and Trim available through CBM	Note:
SUBJECT TO CHANGE WITHOUT NOTICE	



DRAWING: 7/8" HIP/ RIDGE

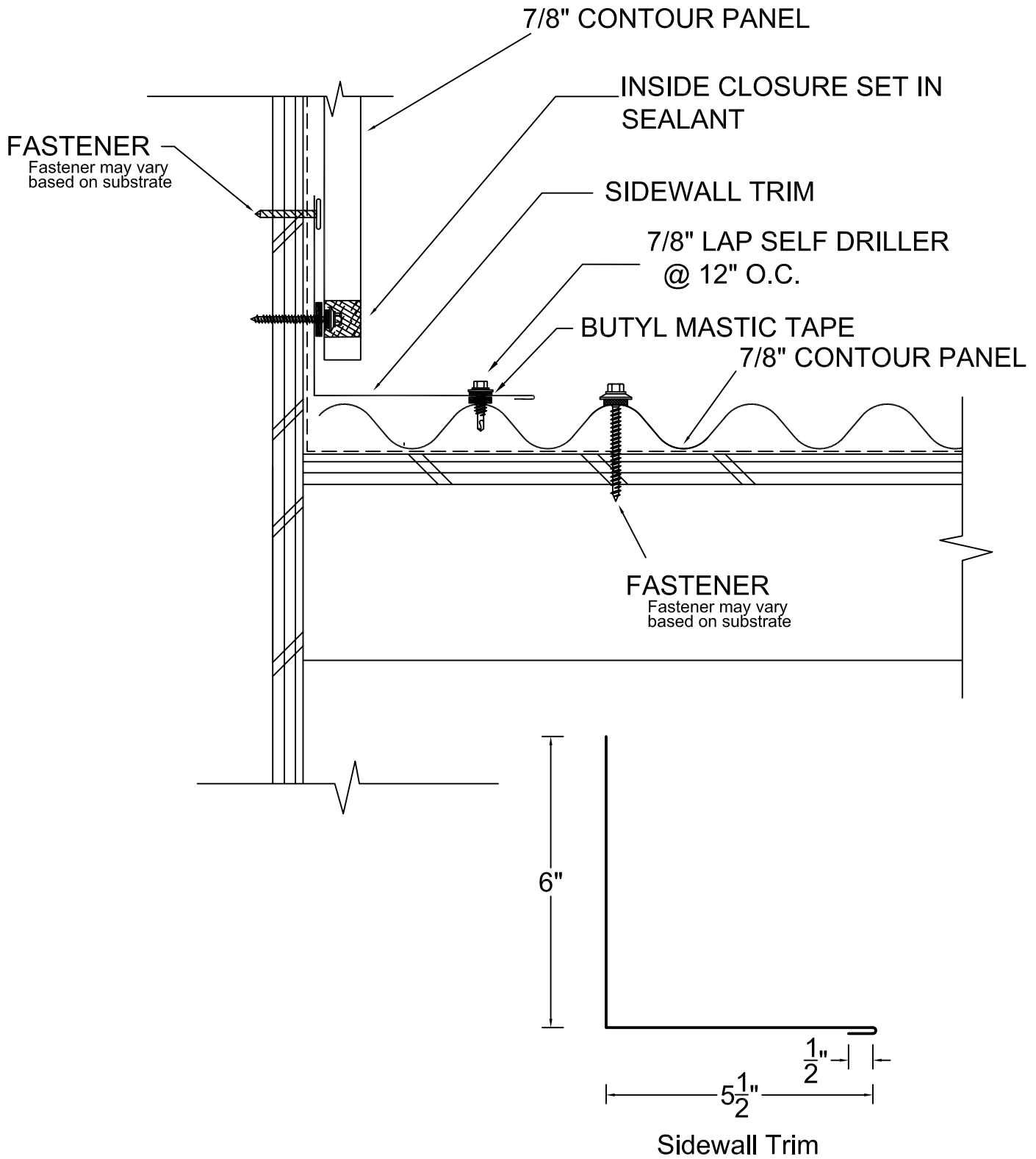
All Flashing and Trim available through CBM	Note:
SUBJECT TO CHANGE WITHOUT NOTICE	



Gable Trim

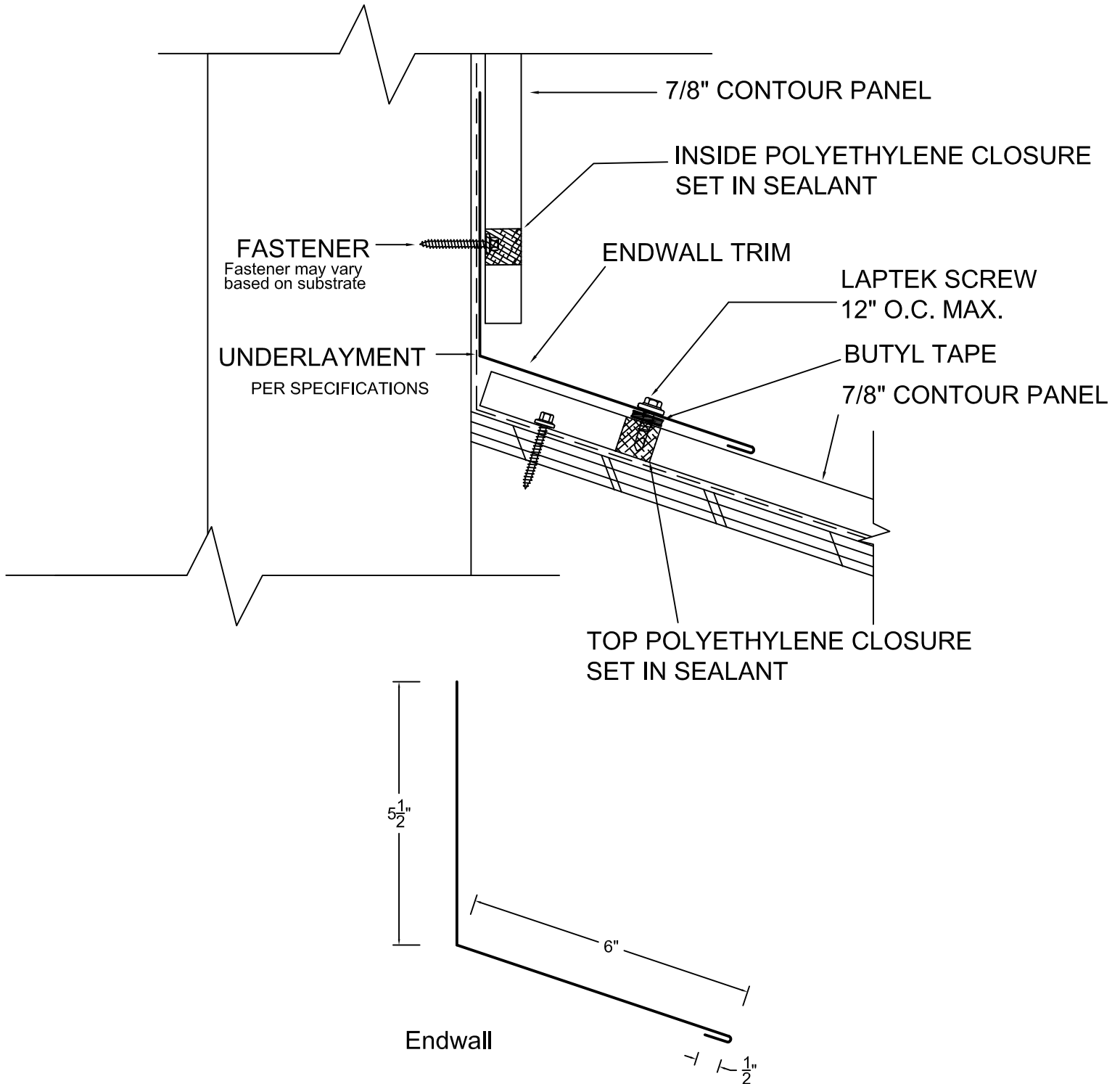
DRAWING: 7/8" GABLE

All Flashing and Trim available through CBM	Note:
SUBJECT TO CHANGE WITHOUT NOTICE	



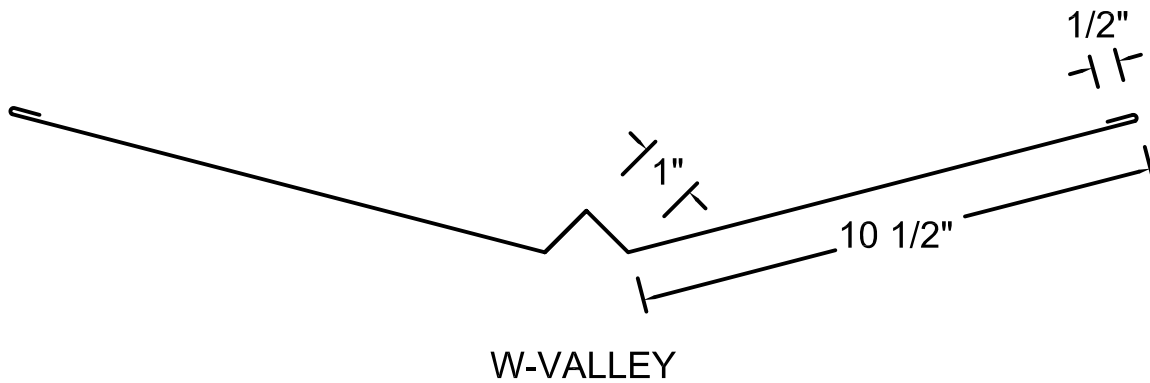
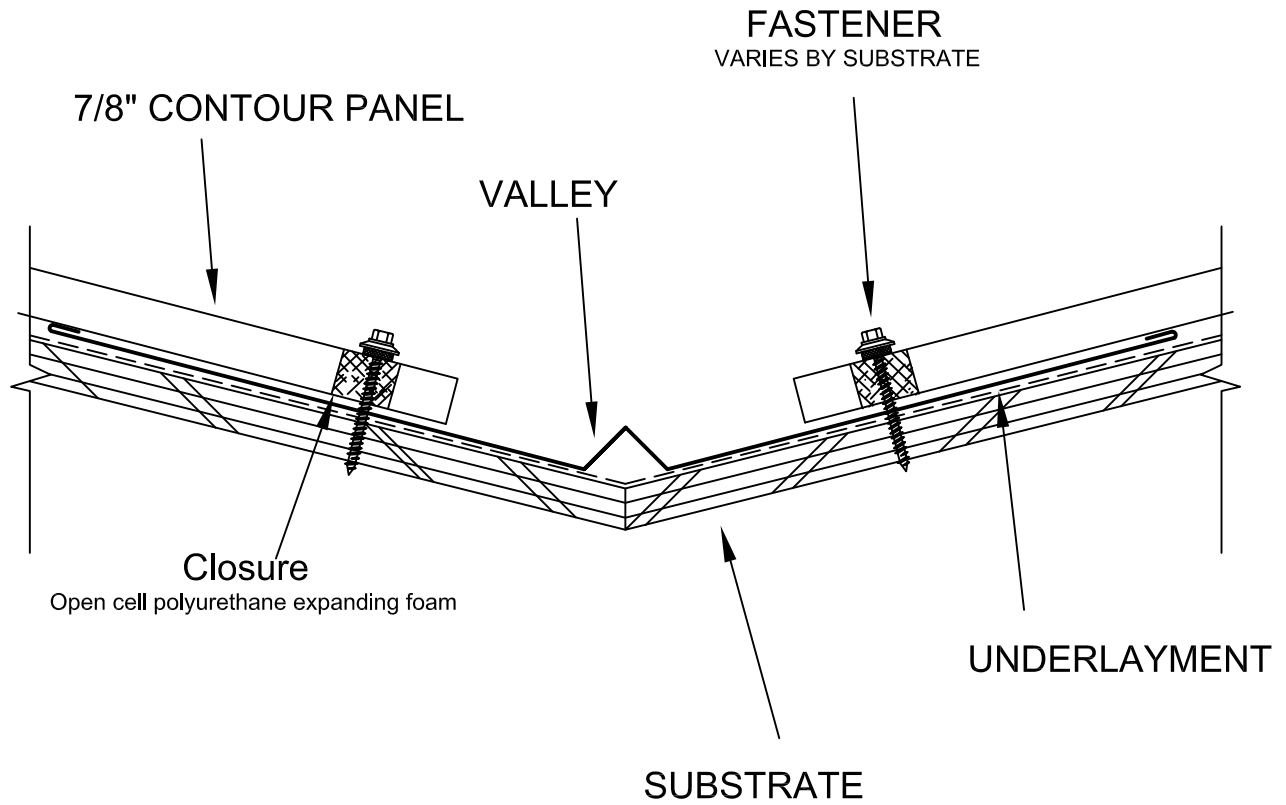
DRAWING: 7/8" SIDEWALL

All Flashing and Trim available through CBM	Note:
SUBJECT TO CHANGE WITHOUT NOTICE	



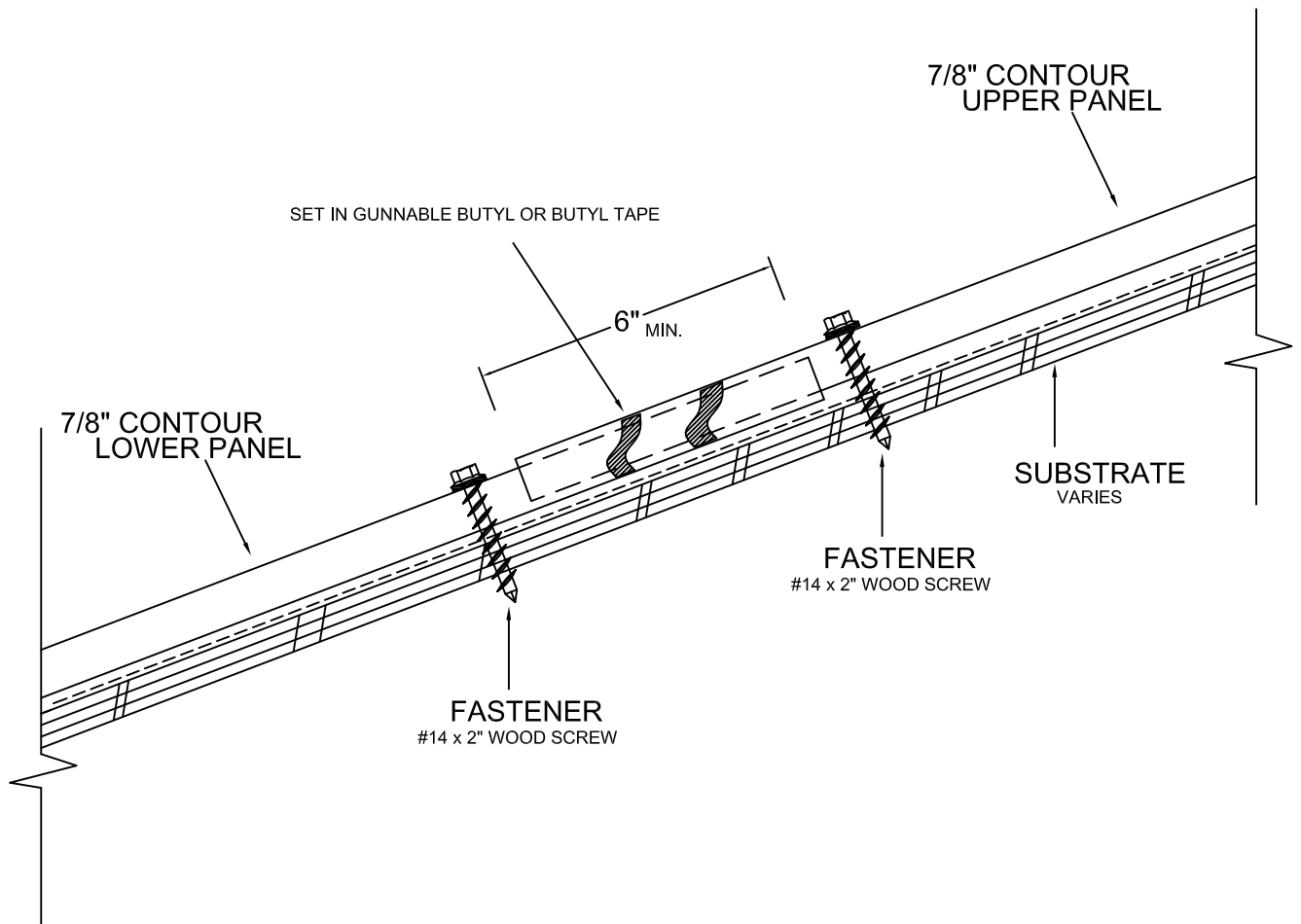
DRAWING: 7/8 " HEADWALL

All Flashing and Trim available through CBM	Note:
SUBJECT TO CHANGE WITHOUT NOTICE	



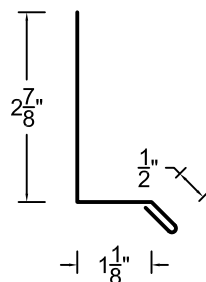
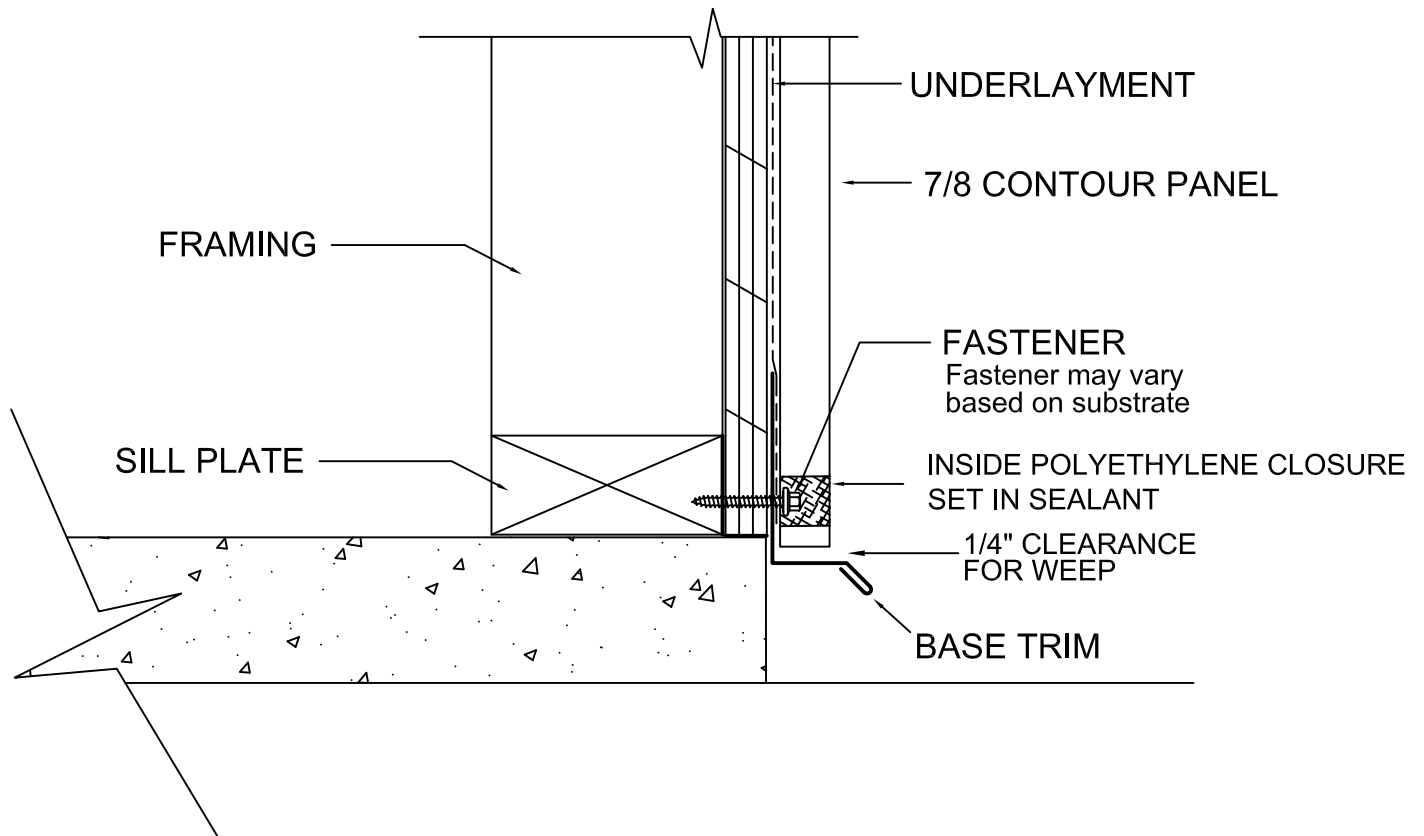
DRAWING: 7/8" VALLEY

All Flashing and Trim available through CBM	Note: VALLEY DIMENSIONS MAY BE ADJUSTED TO ACCOUNT FOR SLOPE, SNOW, ICE AND HEAVY RAIN CONDITIONS.
SUBJECT TO CHANGE WITHOUT NOTICE	



DRAWING: 7/8" CORRUGATED PANEL LAP

All Flashing and Trim available through CBM	Note:
SUBJECT TO CHANGE WITHOUT NOTICE	



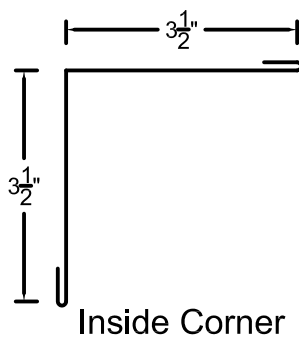
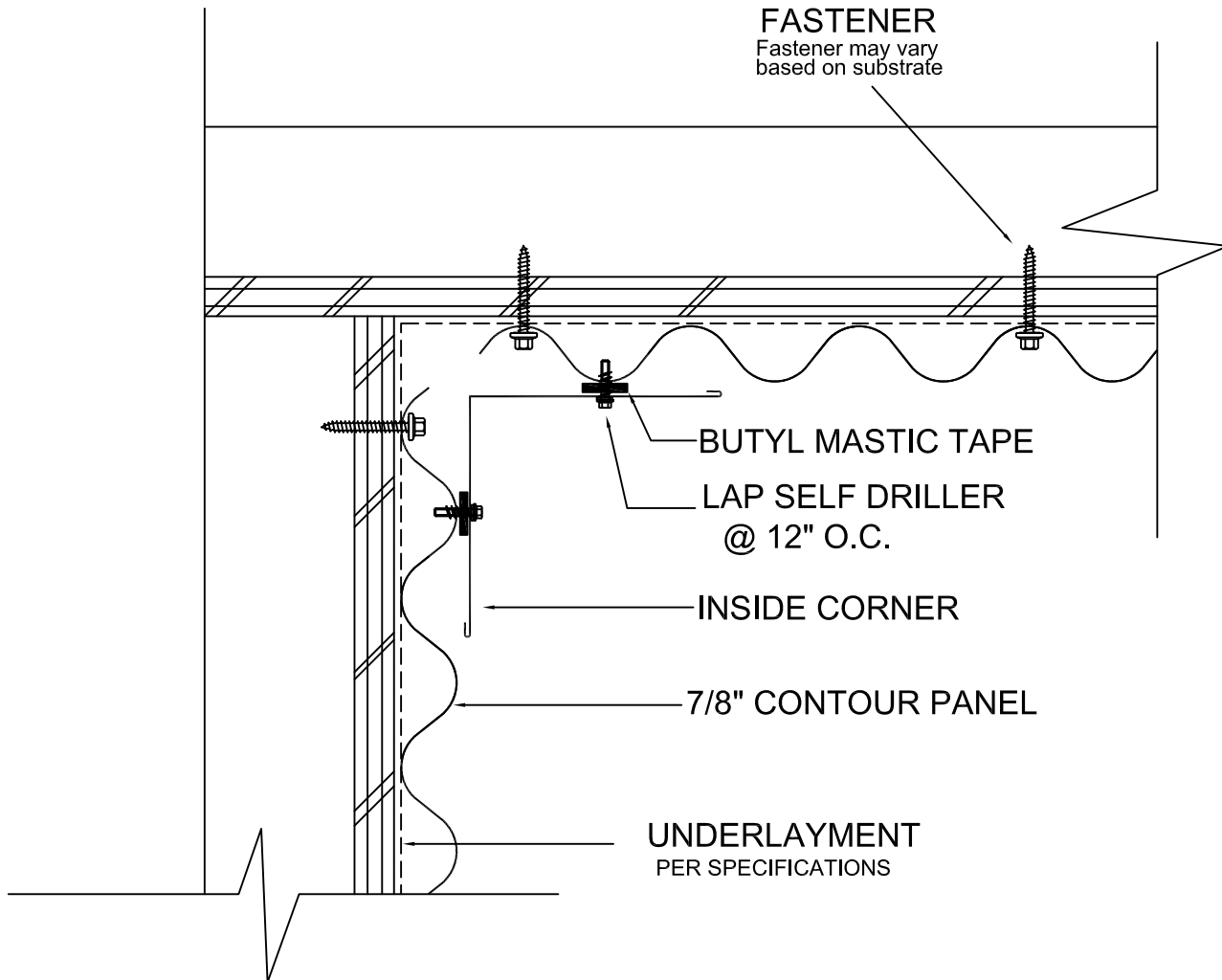
Base Trim

DRAWING: 7/8 " WALL BASE

All Flashing and Trim available through CBM

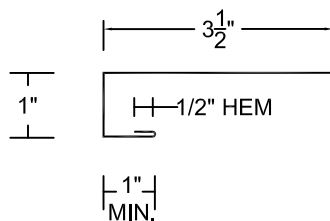
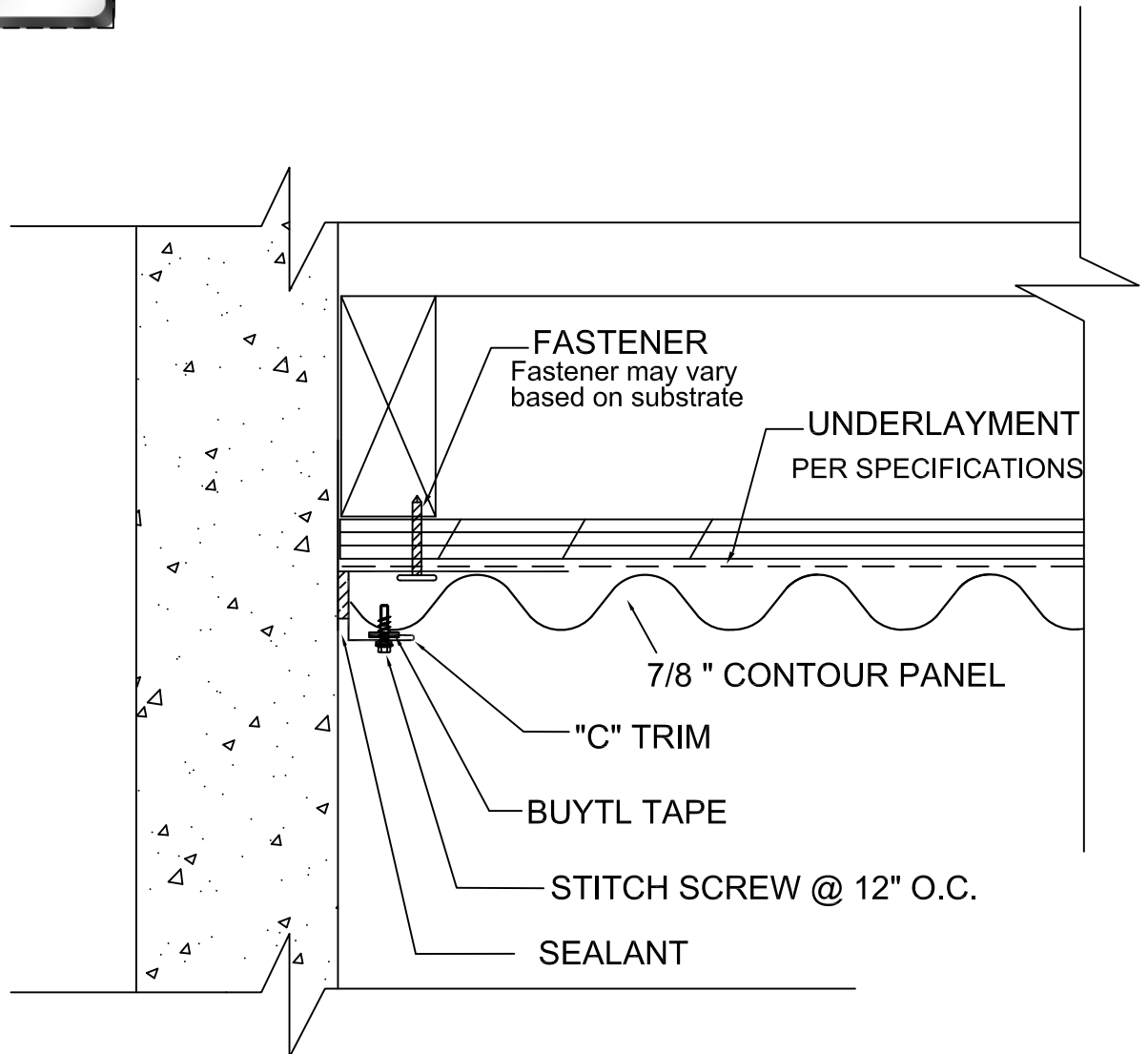
Note: Panel Vertical

SUBJECT TO CHANGE WITHOUT NOTICE



DRAWING: 7/8 " INSIDE CORNER

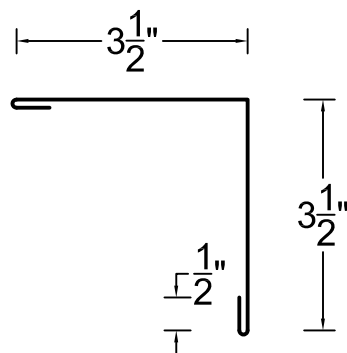
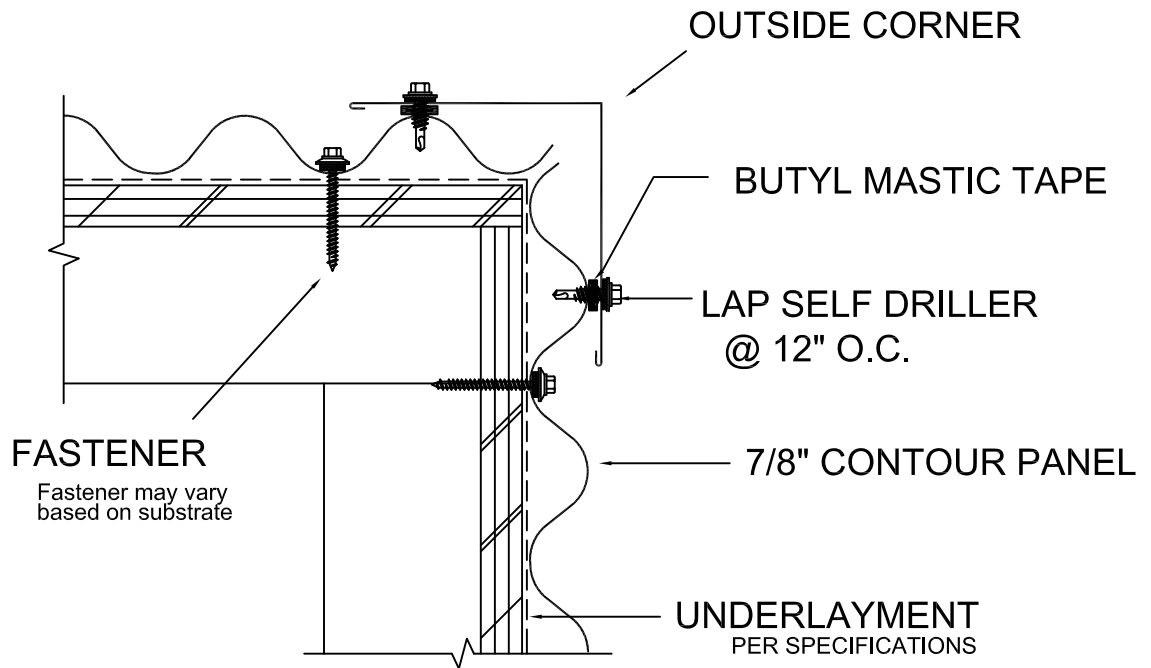
All Flashing and Trim available through CBM	Note:
SUBJECT TO CHANGE WITHOUT NOTICE	



7/8 " CORRUGATED "C" TRIM

DRAWING: 7/8 " INSIDE CORNER TERMINATION

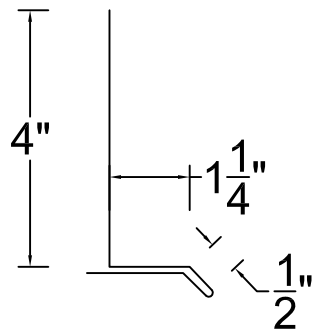
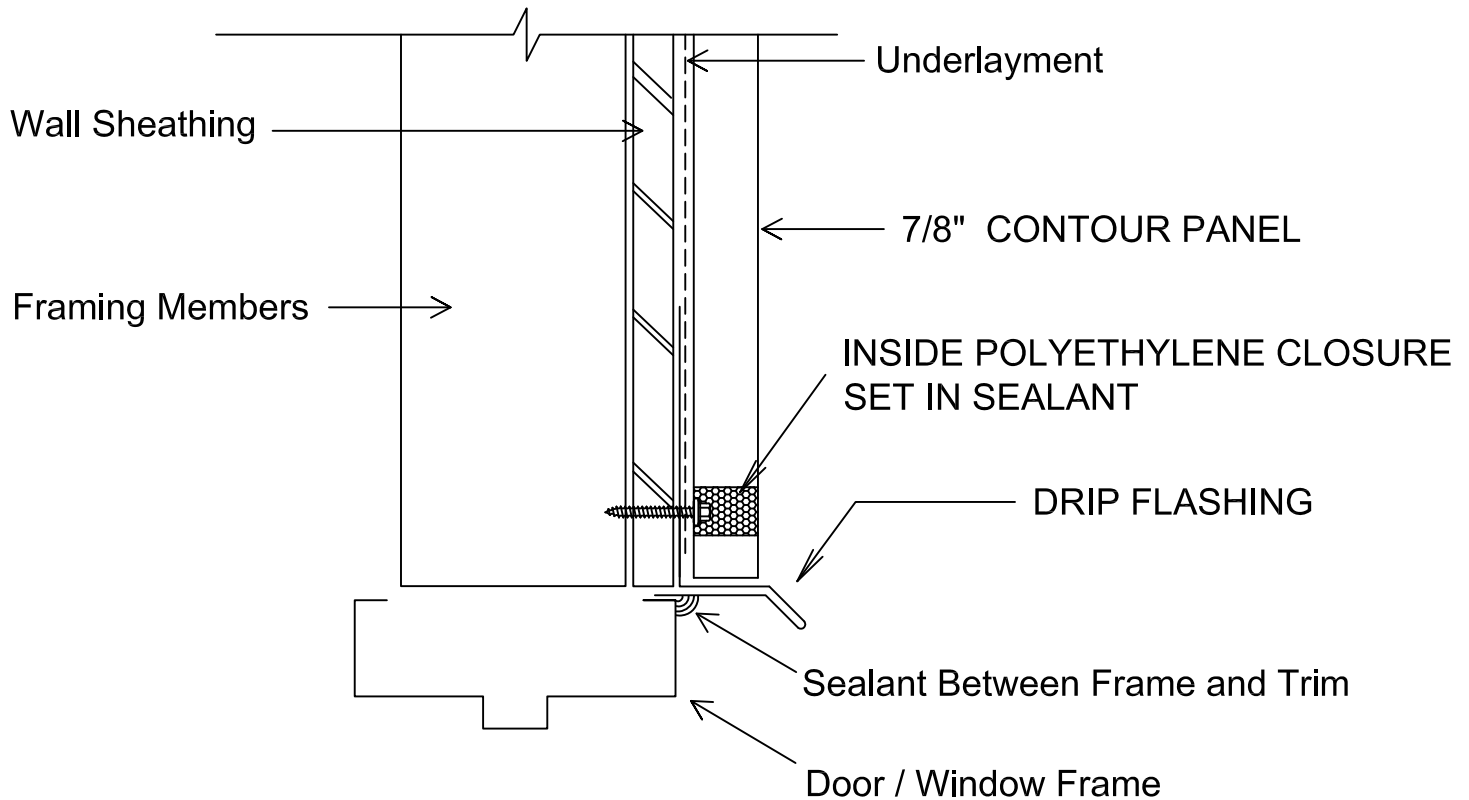
All Flashing and Trim available through CBM	Note: Panels Vertical
SUBJECT TO CHANGE WITHOUT NOTICE	



Outside Corner

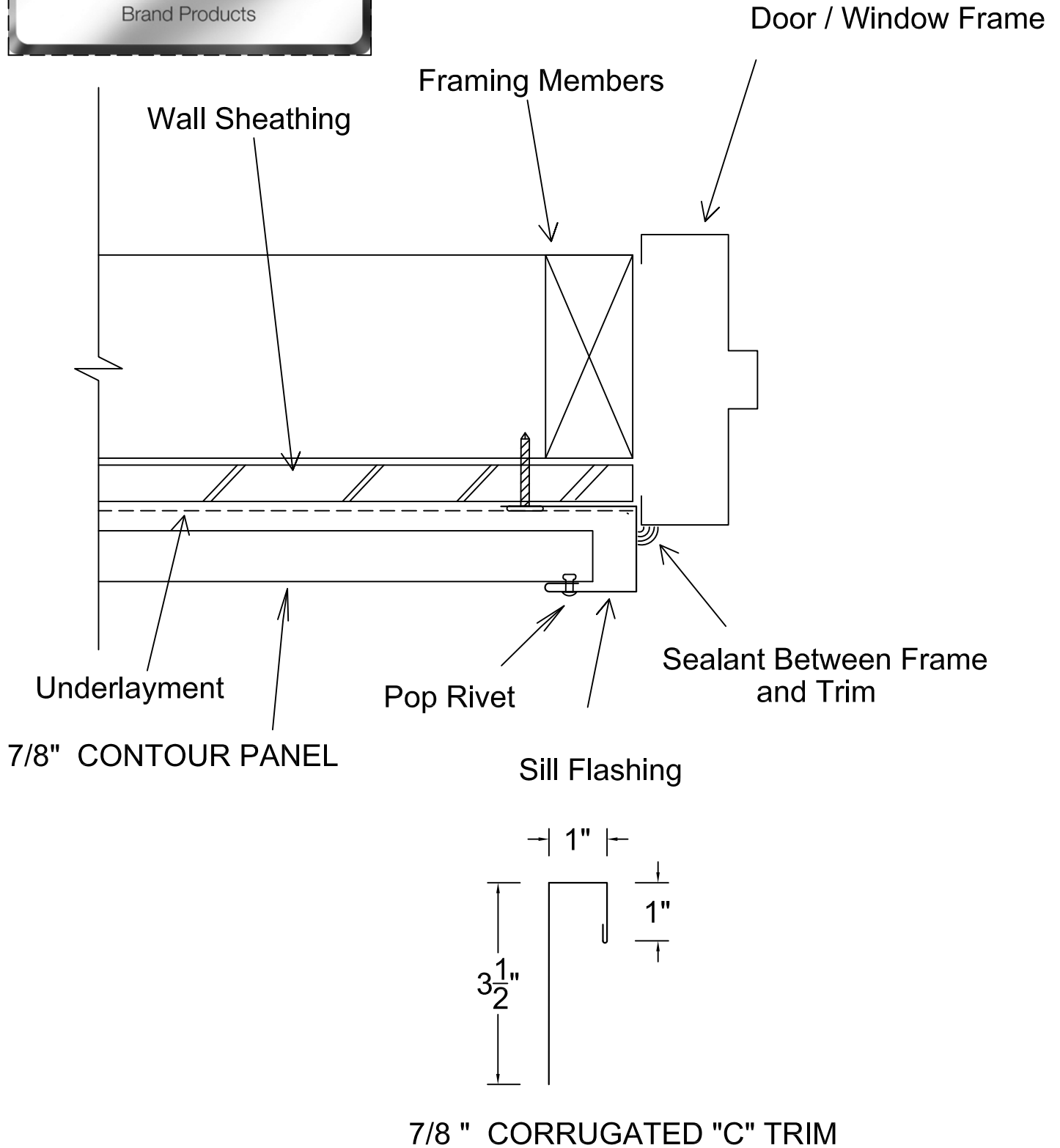
DRAWING: 7/8" OUTSIDE CORNER

All Flashing and Trim available through CBM	Note:
SUBJECT TO CHANGE WITHOUT NOTICE	



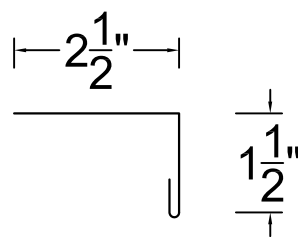
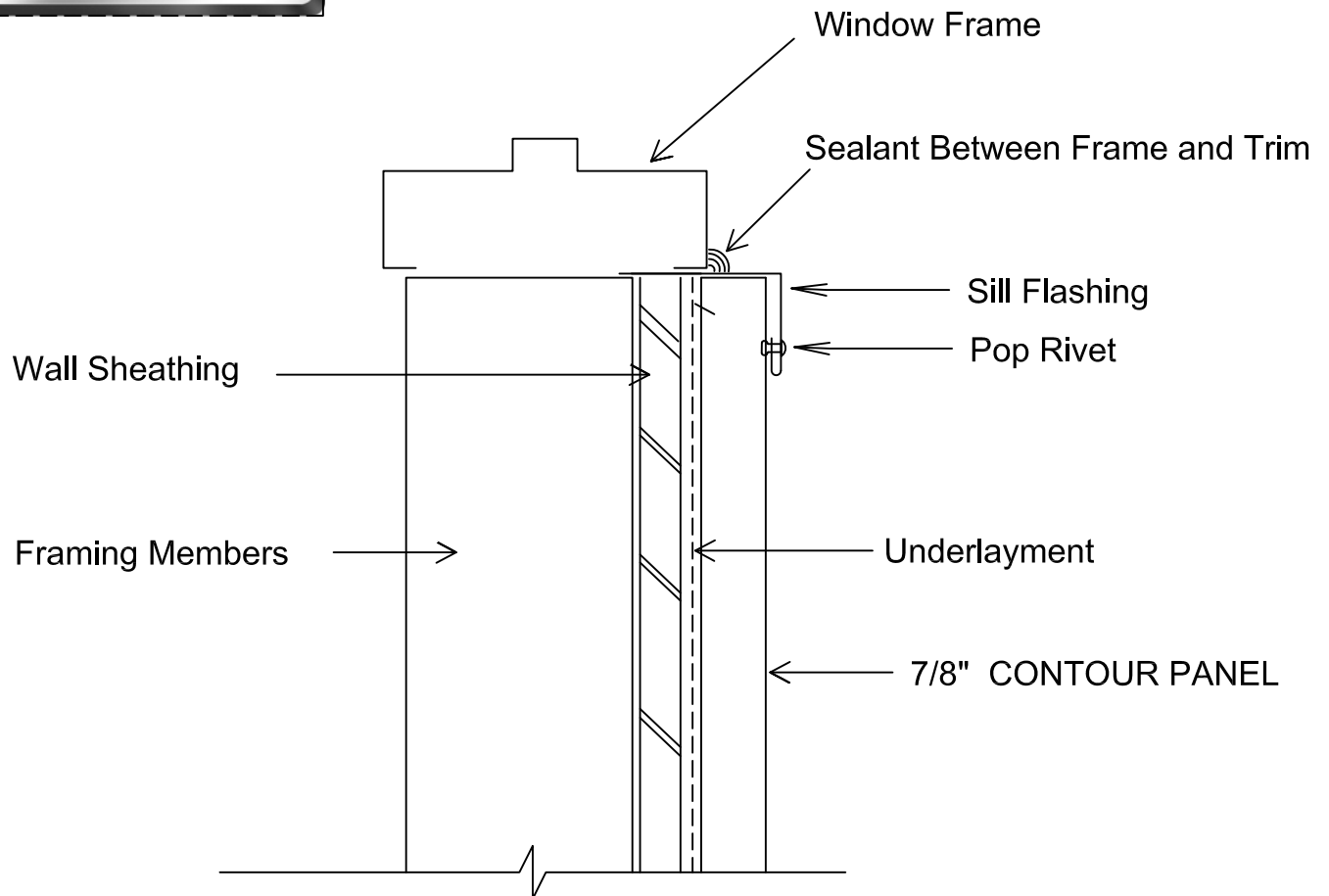
DRAWING: 7/8" DOOR / WINDOW HEAD FLASHING

All Flashing and Trim available through CBM	Note:
SUBJECT TO CHANGE WITHOUT NOTICE	



DRAWING: 7/8" DOOR / WINDOW JAMB

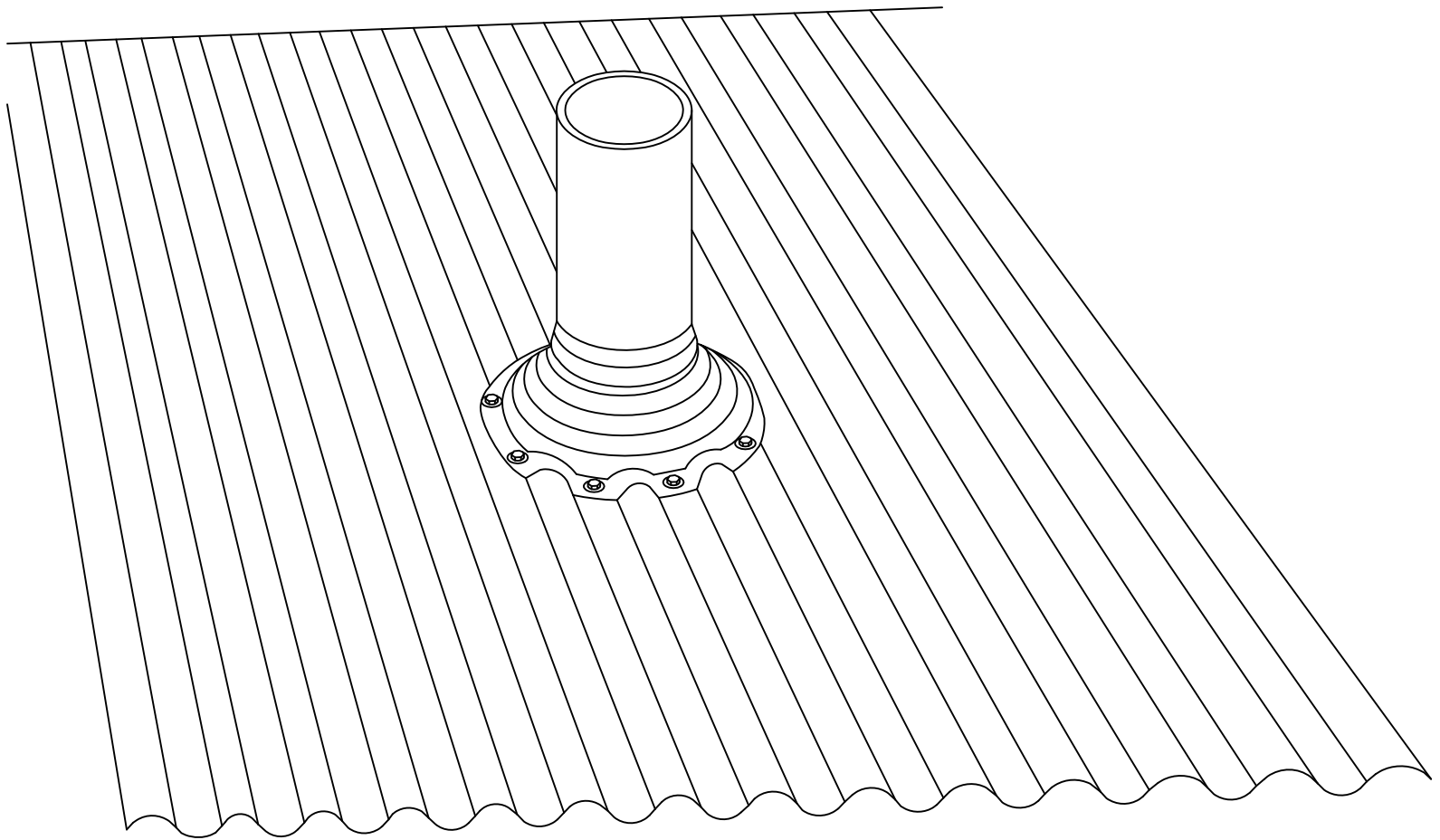
All Flashing and Trim available through CBM	Note:
SUBJECT TO CHANGE WITHOUT NOTICE	



Sill Flashing

DRAWING: 7/8" WINDOW SILL FLASHING

All Flashing and Trim available through CBM	Note:
SUBJECT TO CHANGE WITHOUT NOTICE	



Rubber Boot Flashing
Set in Butyl Tape Sealant

DRAWING: PIPE with RUBBER BOOT

All Flashing and Trim available through CBM	Note:
SUBJECT TO CHANGE WITHOUT NOTICE	